

Adding New Printers to Pcounter

INTRODUCTION

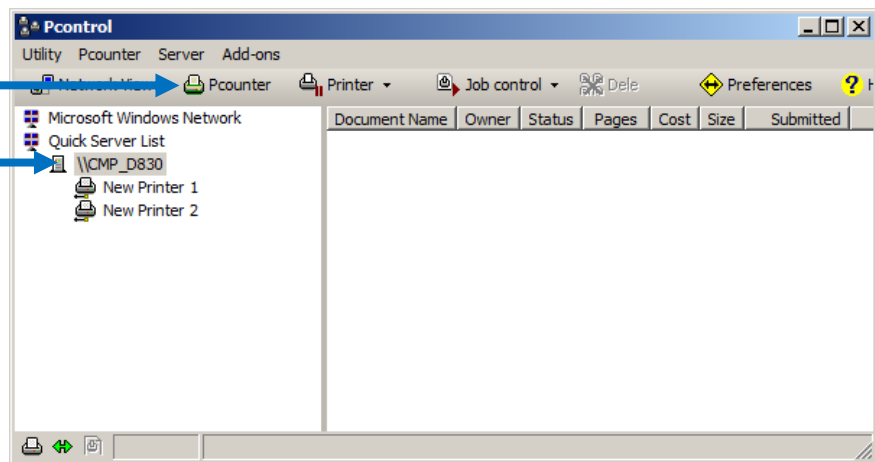
This document explains how to configure a new printer so that it is monitored by Pcounter.

This document is intended as a quick start guide only. As such details of some options are not fully explored. For full details see the [Pcounter for Windows Documentation](#).

Please note: A standard Windows TCP/IP or LPR queue needs to be setup to the new printer before proceeding.

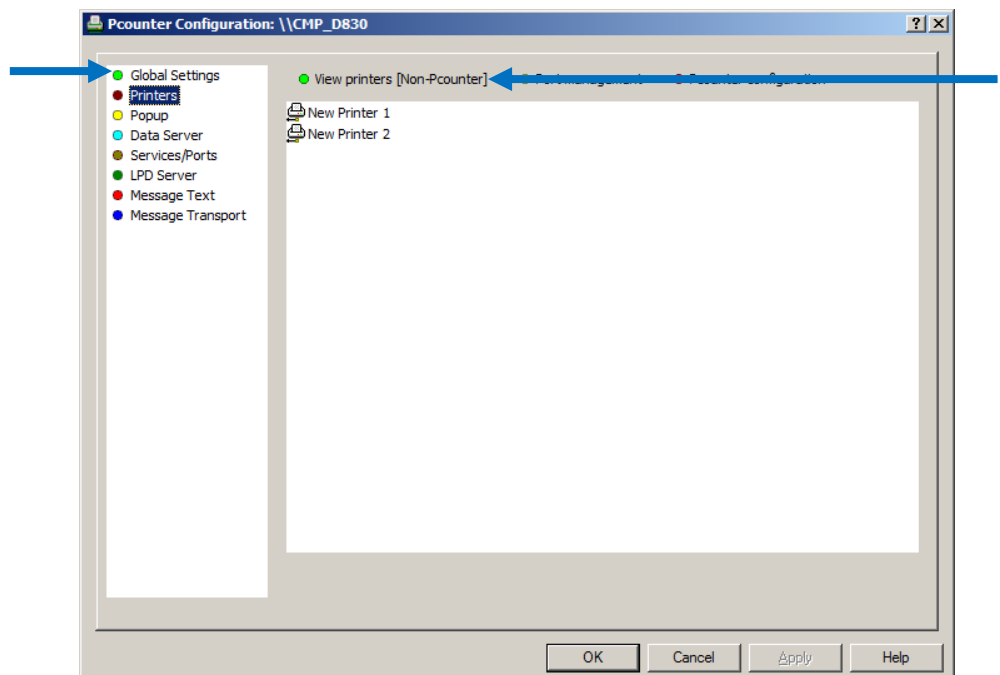
1. Migrating a Single Printer

In **Pcontrol** on the **Pcounter Server**, select the name of the server and hit the **Pcounter** button to open the **Server Configuration**.



On the Server Configuration screen select **Printers** from the left hand menu. Select "**View Non-Pcounter Printers**" from the **View Printers** menu. The list box will now show all printers installed on this server which are not being monitored by Pcounter.

[Click here to access further How to Guides](#)



For
Support
[Click here](#)

Adding New Printers to Pcounter

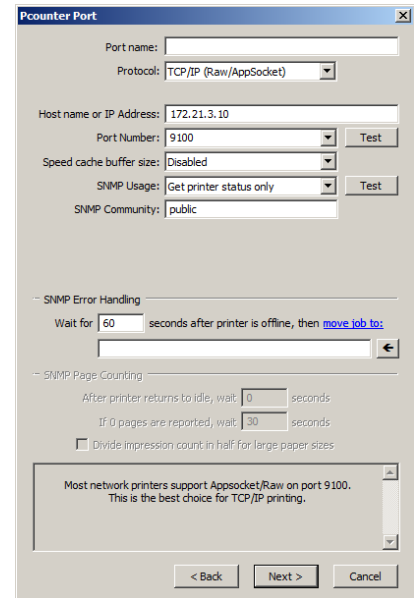
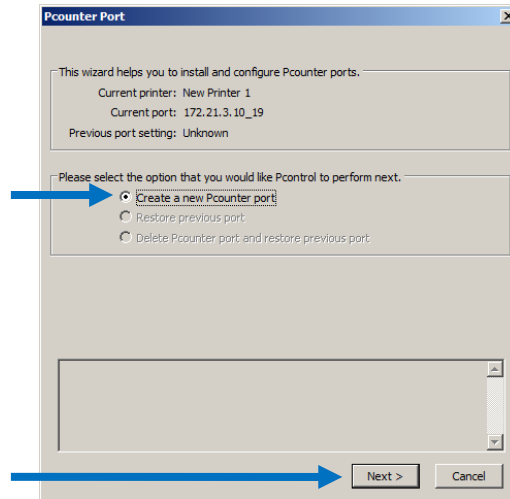
Remember

The Port Name will auto-fill if it is left blank.

It is possible to take a printer off Pcounter through **Port Management > Restore Previous Port** on Printers.

Printers monitored by Pcounter are listed in **green**. None-Pcounter printers are listed in **white**.

Double-click the printer in question. Ensure **Create a new Pcounter port** is selected and click **Next**.



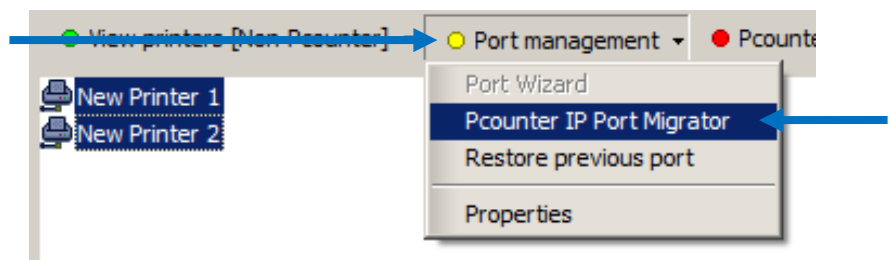
All options on the next screen can be left as a default (see [Part 3](#) for details of these settings). If desired enter a **port name** into the top text box. This is not essential however as if left blank Pcounter will create a name in the format **PCOUNT_[IP]**. Click **Next** followed by finish.

The printer is now being monitored by Pcounter and will be configured with the settings defined in your **Default Printer Configuration Template**.

2. Migrating Multiple Printers

As in [Part 1](#), load the **Server Configuration Printers list** and select **None-Pcounter Printers**.

Using the mouse and either Ctrl or Shift, highlight all of the printers you wish to migrate to Pcounter. Select **IP Port Migrator** under the **Port Management** menu.

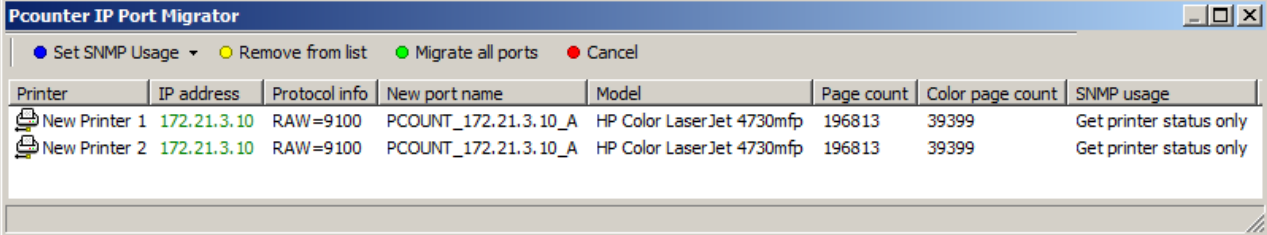


Best Practice Tips...

Before migrating, ensure that your Default Printer Configuration Template has the settings you want the new printers to have.

It is a good idea to ensure that all printers are powered on before migrating, however this is not essential to the procedure.

Adding New Printers to Pcounter



| Printer | IP address | Protocol info | New port name | Model | Page count | Color page count | SNMP usage |
|---------------|-------------|---------------|----------------------|---------------------------|------------|------------------|-------------------------|
| New Printer 1 | 172.21.3.10 | RAW=9100 | PCOUNT_172.21.3.10_A | HP Color LaserJet 4730mfp | 196813 | 39399 | Get printer status only |
| New Printer 2 | 172.21.3.10 | RAW=9100 | PCOUNT_172.21.3.10_A | HP Color LaserJet 4730mfp | 196813 | 39399 | Get printer status only |

The SNMP usage can be set for multiple printers by selecting them and changing the setting under **Set SNMP Usage**, however it is recommended simply to leave this with the default setting.

Click the Migrate all ports to begin the migration. The process will usually take a few seconds per printer however this can increase up to 30 seconds if Pcounter cannot communicate with the printer, for example if it is turned off.

Once complete, **Converted Successfully** will appear in the **Result** column. Click the **Close** button to finish.

3. Port Settings

Protocol

The protocol selected in here should always be TCP/IP RAW if the queue was setup as a TCP/IP port, or LPR if the queue was setup as an LPR queue.

Hostname or IP Address

The hostname or IP address of the printer in question

Port

The port used for communication to the printer. It is very rare that this will ever need to be anything other than 9100

Speed cache buffer size

This feature increases the size of the packets sent from the server to the printer. Usage can increase print speed, particularly in low-end desktop printers. This can be set to Disabled, 64Kb or 16Kb

SNMP Usage; has 3 settings

None

Get Status Only: Pcounter will get real time updates of the printer status which will show issues such as paper jams, toner low/out etc...

Get Status and Pagecounts: Pcounter will query the internal counters of the printer before and after each print job and use this to determine the exact page count. This allows Pcounter to determine the precise colour/mono breakdown of one job and charge accordingly. Using this setting will incur a performance hit however.