

# Canon Embedded Solution

Integrated Print & Copy Software

## Overview

Control print & copy output directly from your Canon device's touchscreen. Simple to use, the software enables real-time integration between Pcounter and Canon multi-function devices. Authenticate by user ID + password, ID card or biometrics with support for secure print, pull-printing and copier accounting and cost centre allocation without the need for additional hardware or wiring.

## Embedded Software

Enables convenient secure release at the device improving the speed and quality of the user experience and facilitates rationalisation of devices. Piles of waste paper are evidence to the fact that many print jobs are never collected. By enforcing secure release, jobs are not printed unless the user authenticates at the device achieving typical **cost savings in the region of 30%**. **Integrating your print & copy accounting** centralises management and reporting, greatly reducing the burden of administration.  
**The result - dramatic cost and environmental savings.**

## Features

- Pull Printing – securely release print jobs at any MFD.
- Photocopy Accounting - real-time control and accounting of copy activity.
- Quota Management – Pcounter free quota and account balance support
- Charge-back – supports department code selection (can be user/group associated)
- Client Billing – supports client codes and sub code search and selection
- Reporting – flexible reporting by user, code and job type and much more
- Guest users – supports Pcounter guest user printing, copying, tracking, accounting and charging.
- Flexible login options via
  - Panel - configurable touch screen login options
  - ID card, key fob or tag (all major card types supported).
  - Biometrics – login using finger as the identity method
- Direct integration between Canon MEAP enabled MFDs and Pcounter

## Benefits

- Secure and easy to use - reduces queues at the printer
- Flexible, configurable authentication
- Centralised, integrated accounting and reporting
- Global client code management
- Single network purse for all copy and print transactions
- Significantly reduces waste, as only verified documents are printed
- Low cost compared with external hardware devices
- No additional wiring required for simple installation
- Small footprint - low energy - environmentally friendly

**Take control with Pcounter. Scalable, network-based print management software for:**

Education  
Public Sector  
Corporate  
Finance  
Professional

**Cut costs  
Eradicate waste  
Improve performance**

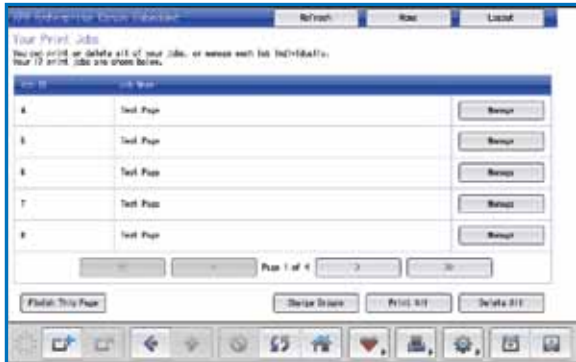
### Solution modules

Pcounter Core Solution  
Secure Pull Printing  
Copier Integration  
Biometric Integration  
Mobile Printing  
Reporting Suite  
Charging Systems  
Print Room Integration  
Local Printer Accounting  
Resource Planning  
Database Integration

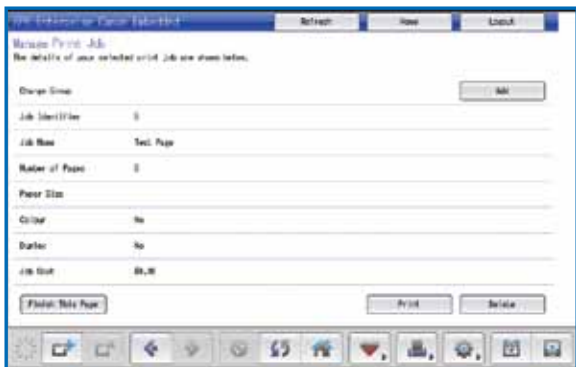


## Ideal For

Any organisation with Canon MEAP capable devices wishing to centrally account and control printing & copying. The solution will reduce waste/cost and provide a reliable, secure way of releasing prints on shared devices.



XPR Enterprise® Embedded  
Release Your Print Jobs



XPR Enterprise® Embedded  
Manage Print Job Screen

**Altman Technologies and ICS Limited are UK based providers of print & copy management software and hardware.**

We pride ourselves on our levels of service working closely with our customers to provide optimised solutions that offer real value for money.

We provide flexible training, onsite consultancy and installation, telephone and web-based technical support, and deployment assistance.

If you can't find what you need please contact our solutions team outlining your requirements and we will do our best to assist you.

Altman Technologies Ltd  
2 Hawthorn Park,  
Coal Road, Leeds  
LS14 1PQ, UK  
T: 0113 273 0300  
E: info@altman.co.uk  
W: www.altman.co.uk

Integrated Card Solutions Ltd  
3-4 Church Lane,  
Naphill, Buckinghamshire  
HP14 4US, UK  
T: 01494 565066  
E: sales@ics-limited.co.uk  
W: www.ics-limited.co.uk

## Technical Data

### MFD Requirements & Supported Models:

- Canon 'Image Runner Advance' series. Device compatibility should be checked with Altman Technologies or ICS Ltd.
- Canon MEAP licence needed
- Canon Web Access software H1 installed.

### Server System Requirements:

- Operating Systems Microsoft Windows Server 2003 / 2008. Architectures X86, X64
- Microsoft .NET 3.5 framework
- Pcounter PRO (Windows and NetWare Support)

Please contact us for a detailed requirements document.

## Evaluation Available

- Trial available by arrangement,
- For more information please contact one of our solutions team:

T: 0113 273 0300    E: solutions@altman.co.uk  
T: 01494 565066    E: sales@ics-limited.co.uk