



OVERVIEW

Altman Technologies specialise in network-based, enterprise software solutions which provide round-the-clock auditing and surveillance of user generated activity across Microsoft and Novell network environments. LT Auditor+ monitors, alerts and reports on events such as logins, failed attempts, file access, security policy and account changes providing detailed, exception reporting on Who did What, Where and When. The easy deployment and day to day management of the system ensures that IT management can meet the demands of auditors without compromise and without the need for additional system or staff resources. Privacy and confidentiality can be proven - IT security policy and regulatory compliance is assured.

KEY FEATURES

- ✓ 24/7 enterprise event monitoring and auditing of user activity
- ✓ Tracking of logins, security changes, file access and administrator activity
- ✓ Extensive filtering of events at both collection and reporting stages
- ✓ Real-time alerting options by email, network message or SNMP
- ✓ Consolidated exception reporting from multiple servers and mixed platforms
- ✓ Effective, efficient processing of Windows event logs

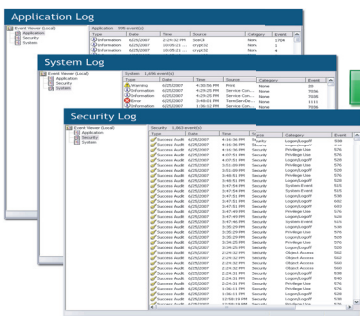
Datasheet LT Auditor+

Centralised Active Directory & eDirectory Auditing, Alerting & Reporting

WHO NEEDS NETWORK AUDITING

Statistics show the biggest threat to network security is from perceived trusted sources "inside the firewall" - employees, contractors, partners etc. Round the clock surveillance ensures all activity on your computer network is tracked. LT Auditor+ provides this functionality and is used extensively in corporate, financial, government and public sector institutions where regulatory compliance and meeting the needs of internal auditors is paramount.

From Raw Event Logs...



to Actionable Intelligence

LT Auditor+ 9 for Windows Radar for Your Network			
Type:	Chronological Columnar Report Group by User		
Generated On:	Thursday, June 22, 2007		
Generated By:	CORP\jsmith		
LT Auditor+ Activity Report			
Date & Time	Operation	Target Machine	Remarks
CORP\Johnson : 10.5.6.101			
6/21/2007 4:21:13PM	Login	CORP_R001	Failed login to CORP_R001
6/21/2007 4:21:26PM	Interactive Login	CORP_R001	Logged in to server
6/21/2007 4:31:52PM	Create Object	CORP_DC1	Created user cn=PClinton, ou=Users
6/21/2007 4:34:44PM	Add Member to Group	CORP_DC1	Added Member user cn=PClinton, ou=Users to global security group Enterprise Admins
6/21/2007 4:39:06PM	Change Password Policy	CORP_DC1	Set Minimum password length from "7 characters" to "3 characters" for Group Policy "CORP_PDCOUNTING"
6/21/2007 4:51:15PM	Delete Object	CORP_DC1	Deleted Global Group cn=Offshore_Developers, ou=Groups
HOU\Evans : 10.5.6.155			
6/21/2007 2:21:29PM	File Modify	HOU_FINANCE	Modified File E:\HCCT\Financial\YML_Links.xls
6/21/2007 2:23:01PM	USB: File Create	HOU_EVANS	Create File J:\Personal\Customer contacts.xls
6/21/2007 2:29:28PM	File Delete	HOU_FINANCE	Deleted File E:\Accounting\Human Resources\HR_Policy.doc

AUDITING RE-DEFINED

Comprehensive network auditing means going beyond traditional static or snap-shot type auditing, which often falls short of the requirements of defined IT security policies, to cover event-based auditing as well. LT Auditor+ provides the ability to determine precisely who logged in, where they were working, what files or settings they accessed or changed, and when they did so, and the ability to follow a trail of events.



Audit information can be retained for extended periods of time in a MS-SQL or Oracle database, allowing an organisation to store audit activity for several months.

This capability also allows for detailed forensic analysis when a security breach occurs and can give a clear picture of how and why it occurred.

KEY BENEFITS

- ✓ Centralised, automated, cross platform consolidated audit reports
- ✓ Pinpoint suspicious activity and security breaches
- ✓ Compliance with IT security policy without the need for compromise
- ✓ Adherence to legislative and regulatory requirement
- ✓ Transforms complex raw data from logs, file systems, portable storage systems and directory services into clear, concise, actionable intelligence

TECHNICAL DATA

- Supported on all Microsoft Windows and Active Directory servers
- Supported on all Novell NetWare and eDirectory servers
- Report generator options: Microsoft SQL or Oracle
- 64 bit platform server support
- Three-tier client/server architecture

EVALUATION

- Download from www.altman.co.uk/ltauditor
- For more information please contact our solutions team:
T: 0113 273 0300
E: solutions@altman.co.uk

AUDITING

Auditing the Auditor LT Auditor+ provides the ability to police itself ensuring total integrity of the audit function. The actions performed within the software are audited in the same way as system events with the standard alerting and reporting options.

ALERTING

Alerting options LT Auditor+ provides options to set real-time alerts on any monitored event with delivery options by email, network message or SNMP. There is an option to run a "transfer job" at the same time to secure the audit data in the event of suspected tampering.

REPORTING

Centralised Reporting LT Auditor+ provides many standard reports, all of which can be customised with additional filters to further refine the granularity of the output - options include screen, printer, PDF, HTML, Word, Excel and Crystal Reports.