

**Pcounter Pro Monitor Gateway
PC20 Terminal Configuration
Set up Guide**



Contents

**The terminal configuration UI
Setting up Device types
Applying terminal Set-up
Adding Terminals
Bring a terminal “On-Line”**

Document revision	Date of revision	Changes	Made by
1.0	10/02/06	First document release	HJT

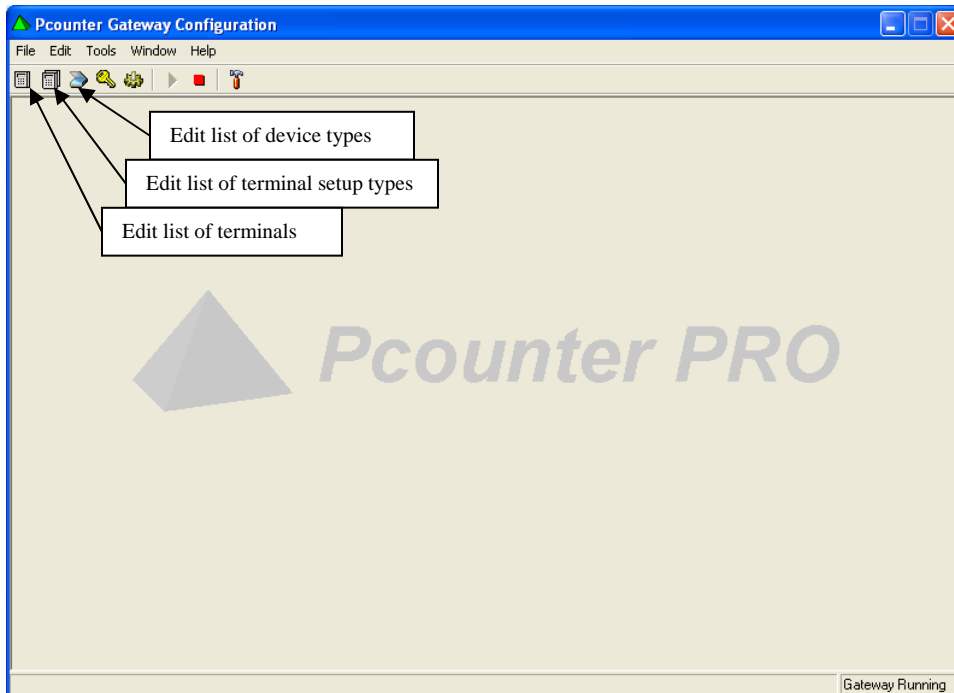
Document prepared by
Date
Document Version

Howard Tucker
10th February 2006
Revision 1.0

Pcounter Pro Monitor Gateway PC20 Terminal Configuration Set up Guide

Each Terminal and that will be used on the system requires an entry in the Terminal Configuration Database. This Database is managed via the Terminal Configuration User Interface.

Start-Programs-Pcounter-Monitor Gateway- Configuration User Interface



Getting Around the UI

Each of the Entry/Edit forms presented in the Configuration UI are divided into two sections, left and right. The Name of the item displayed in the left hand side of the form and the parameter list for that item displayed on the right hand side of the form. The right hand side of the form is not active for entry/edit until you have clicked either the NEW button or the EDIT button on the left hand side of the form. You can however click on the "+" or "-" on the right hand side of the form to expand or shrink a selection.

Several example Terminals have been supplied with the UI, and you can use these as templates for you own requirements.

When you are setting up a Terminal on the system follow these steps:

Pcounter Pro Monitor Gateway PC20 Terminal Configuration Set up Guide

Setting Up a Device Type

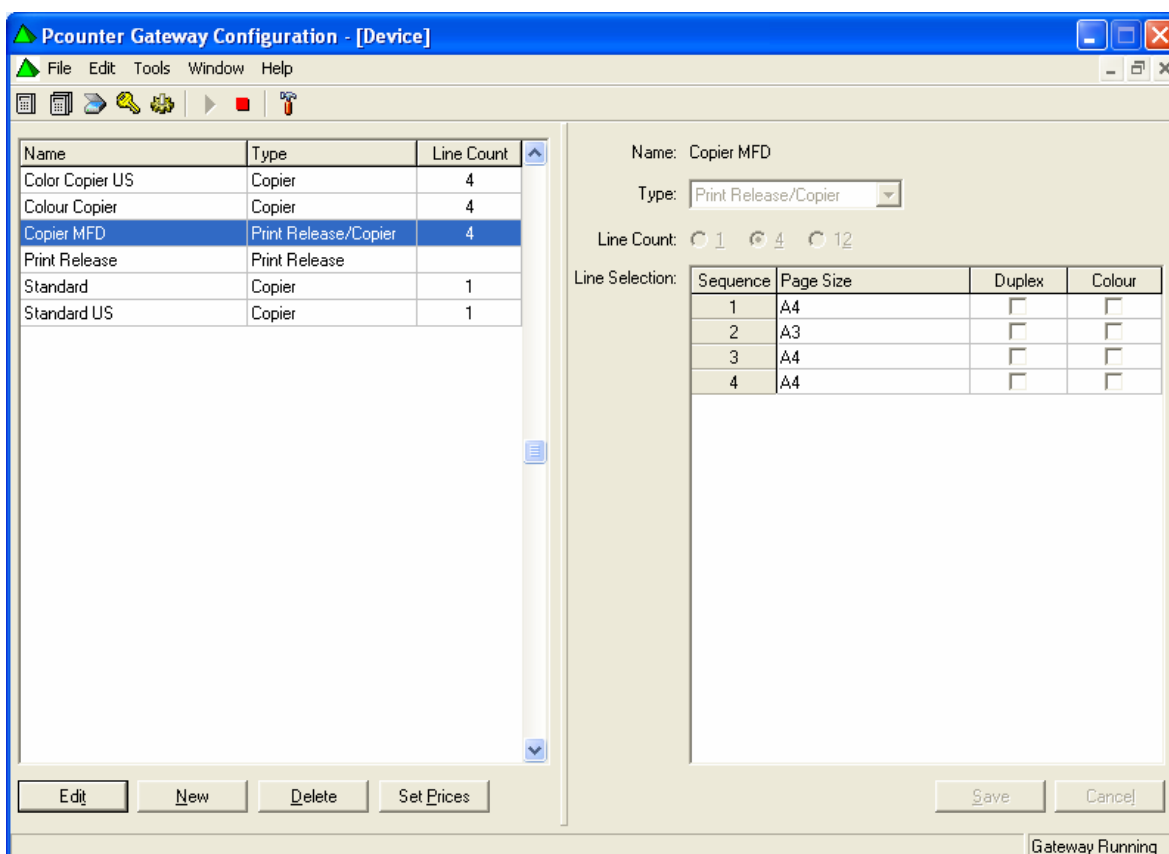
Decide on the device type to be used either....

Copier Print Release Copier/Print Release.

Decide on the price structure you are going to use. Prices are associated with Devices and they are setup in a Pcounter style dialog box. You may need to create new Devices depending on your site requirements. Note that when you setup prices, when using account balances in Pcounter, the accounting type must be set to use account balances and Log File. If you are using unlimited accounts you could just use Log File Only.

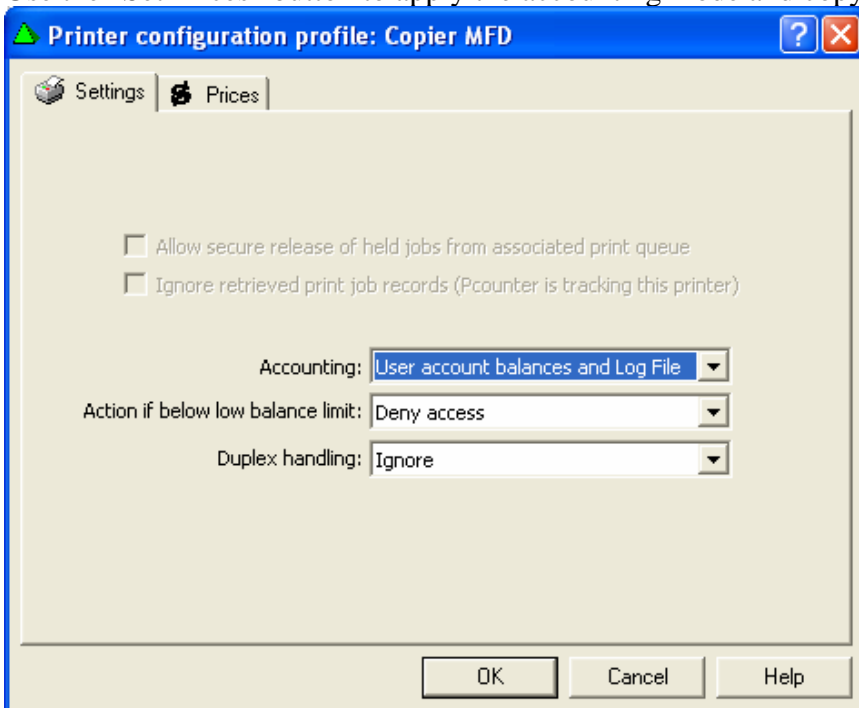
Device Types

Use the “Edit” button to edit an existing Device or the “New” button to add a new one. Use the save button to save the Device type.

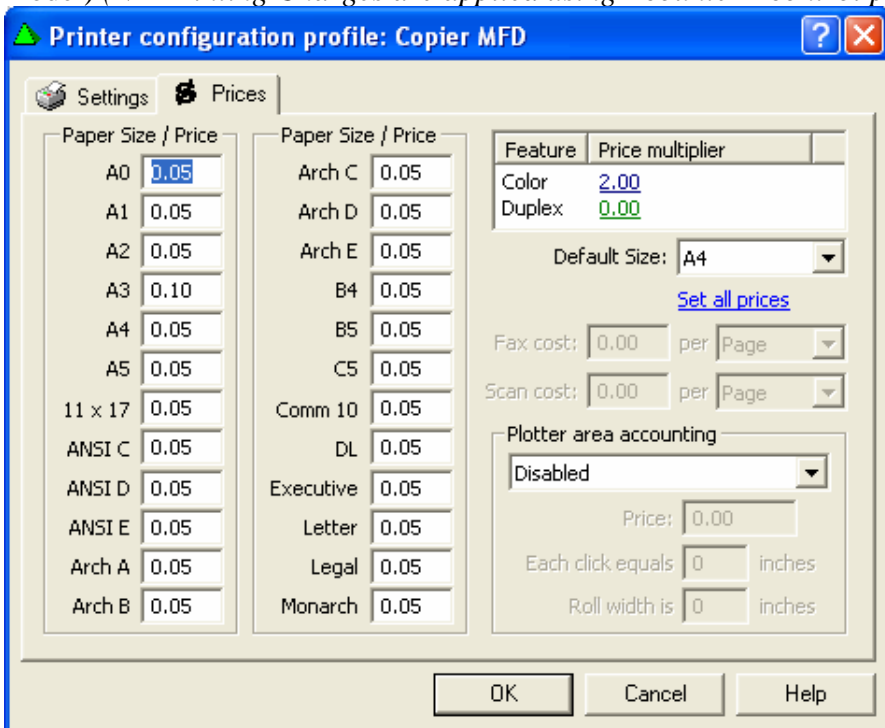


Pcounter Pro Monitor Gateway PC20 Terminal Configuration Set up Guide

Use the “Set Prices” button to apply the accounting mode and copy prices.



Use the Prices tab to set the desired price for copy charges. The copy charges actually achieved are dependant on the make and model of copier in use. Accounting for all paper sizes is not always achievable.(Check with supplier for more details on a specific copier model) (NB Printing Charges are applied using Pcounter Pcontrol printer configuration)

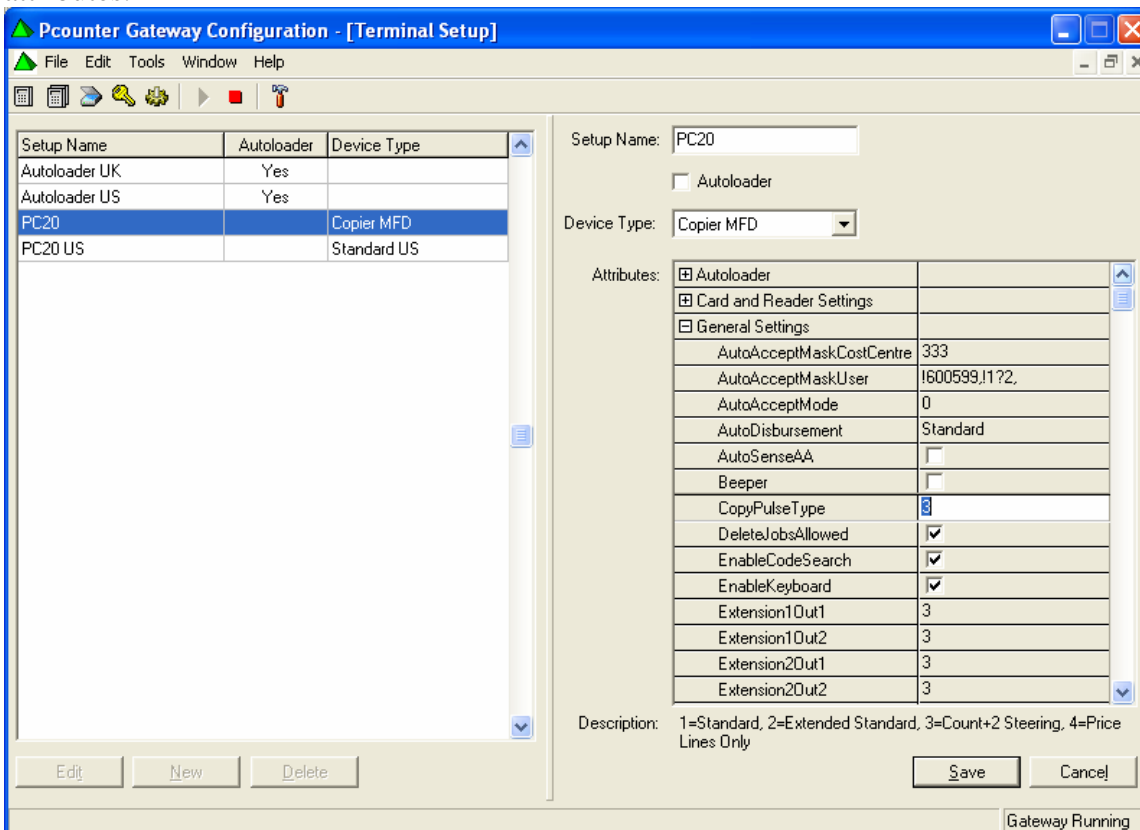


With a Device type saved you can now configure a Terminal Set-up Type.

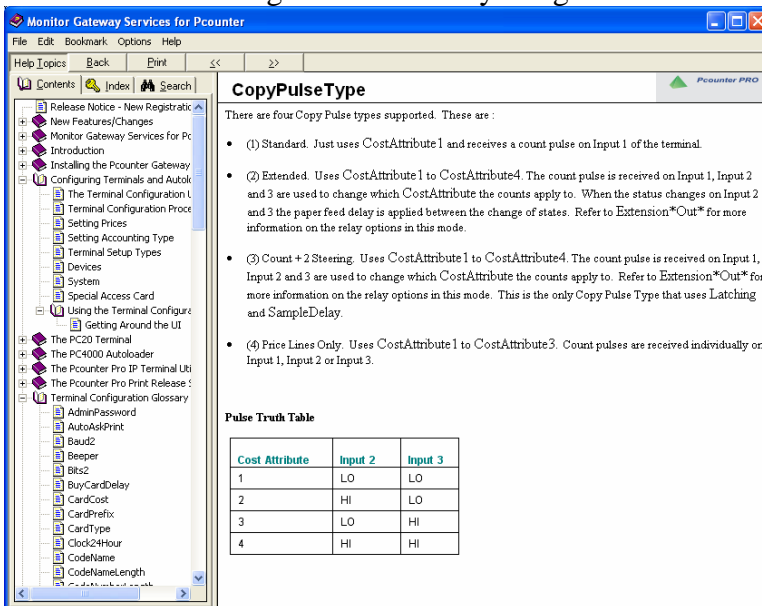
Pcounter Pro Monitor Gateway PC20 Terminal Configuration Set up Guide

Applying Terminal set-up

This form contains all of the Terminal Setup parameters, A device type is applied and various terminal parameter settings can be configured by expanding the required attributes.



For more details on the set-up parameters please refer to the Gateway configuration help file “Terminal Configuration Glossary”. E.g.



With a set-up now configured you can add a terminal to the database

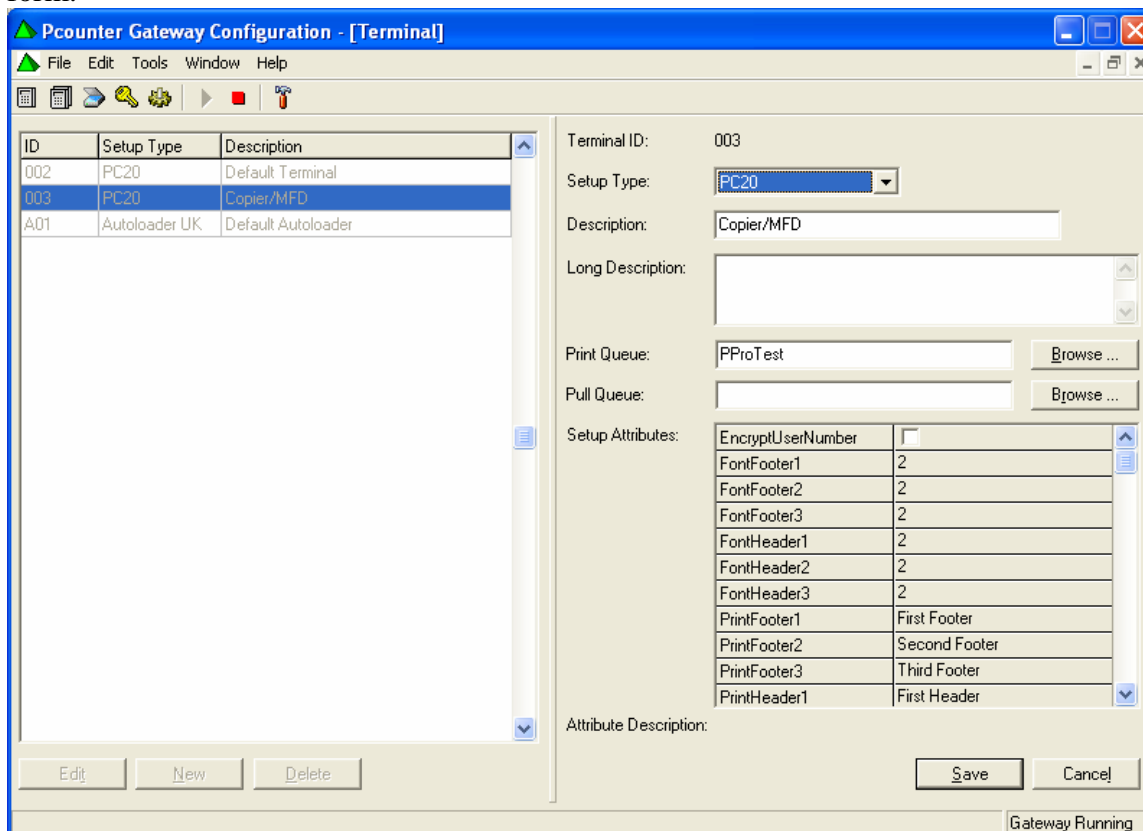
Pcounter Pro Monitor Gateway PC20 Terminal Configuration Set up Guide

Adding Terminals

In the “Edit List of Terminals” form you can add/edit terminals in the database. Apply a “setup type” previously created, to the terminal.

Click “New” to add a new terminal and “Edit” to edit an existing terminal. Click the “Save” button to save the terminal

If the PC20 terminal is to release print jobs the required print queue is assigned in this form.



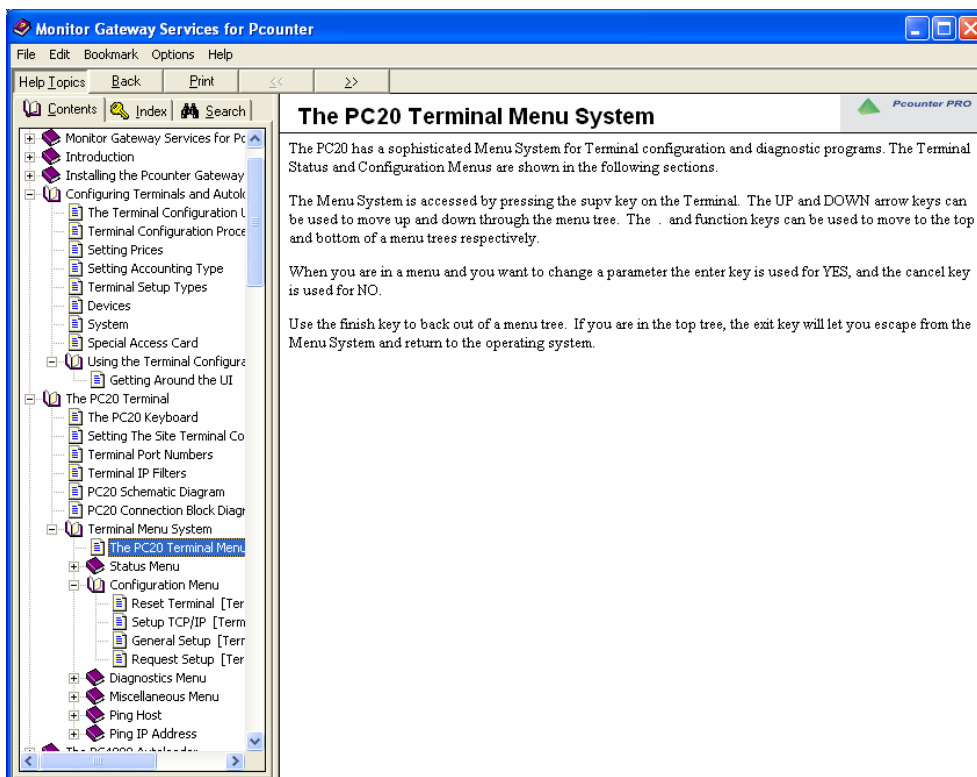
Bring a terminal “On-Line

To configure the PC20 Terminal for your site you will need to collect the following information and enter it into the Terminal.

Item	PC20 Menu	Comments
PC20 Terminal ID	Set-up coms	Must match the terminal ID in the Gateway
IP address for PC20	Setup TCP/IP	Not Required if DHCP used
Subnet mask	Setup TCP/IP	
Host PC IP address	Setup TCP/IP	IP address of PC running Gateway software
Gateway IP	Setup TCP/IP	
Use DHCP	Setup TCP/IP	Enable or disable
TCP/IP port	Setup TCP/IP	Port used = 31100

Pcounter Pro Monitor Gateway PC20 Terminal Configuration Set up Guide

Refer to the Gateway help guide on accessing the PC20 terminal menus



The default password is (6 x dots)

Once the terminal details have been updated the PC20 will connect to the gateway PC and down load its set-up.

The terminal will now be ready for use.

NB. In order for terminal changes to take effect it is necessary to restart the Gateway Service. This is done by clicking the Red Square icon and Green triangle icon on the tool bar of the Gateway configuration user interface

