

Accounting for Mac Printing

INTRODUCTION

Pcounter for Windows can only account for print queues configured on a Windows print server.

Mac printing can be accounted for by using an LPR print queue on the Mac which essentially forwards the job to the print queue on the Windows server.

This document details how to create such a printer on a Mac and the necessary changes to make in Pcounter for Windows.

[Click here to access further How to Guides](#)

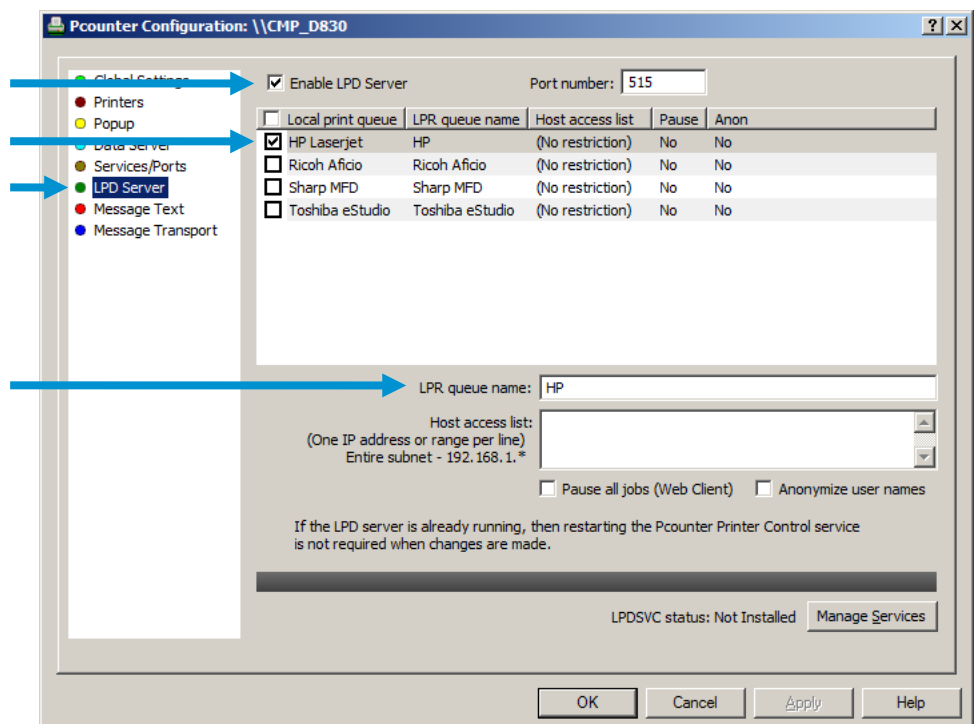
For
Support
[Click here](#)

1. Enable the Pcounter LPD Server

The **Pcounter LPD Server** is the feature of Pcounter which allows it to receive jobs via the LPR protocol. This needs to be enabled in Pcontrol.

To do this

- open the **Pcounter Server Configuration**
- Select **LPD Server** from the left-hand menu
- Check **Enable LPD Server**



All print queues on the server will be displayed in a list. Select the printer which you want Mac users to be able to print from and check the associated checkbox, such as the HP Laserjet above. Once selected, enter a name of your choice into the **LPR queue name** control.

Important: Use only **alphanumeric characters** in this name. The name will not be user visible but it will need to be re-entered manually on each Mac so it is recommended to keep it simple, such as **HP** above.

Important: The **Windows LPD server** (LPDSVC or Windows TCP/IP Print Service) will interfere with the Pcounter LPD Server and **must** be disabled if Mac printing is desired.

Accounting for Mac Printing

Remember

Pcounter's LPD Server uses **port 515** as a default. Ensure that this port is free and the server firewall is open to connections on this port. Port can be changed through Pcontrol is necessary.

The LPD Server port can be changed through the LPD Server screen on the Server Configuration.

The Windows TCP/IP Print Service **must** be disabled if using the Pcounter LPD server. It is recommended to set the status to **disabled**.

Best Practice Tips...

Send a number of **test jobs** from various applications to ensure the two drivers used are **compatible**.

Keep the LPR queue **name short and simple** to minimise the chance of input error when setting up a printer

2. Create an LPR queue on a Mac

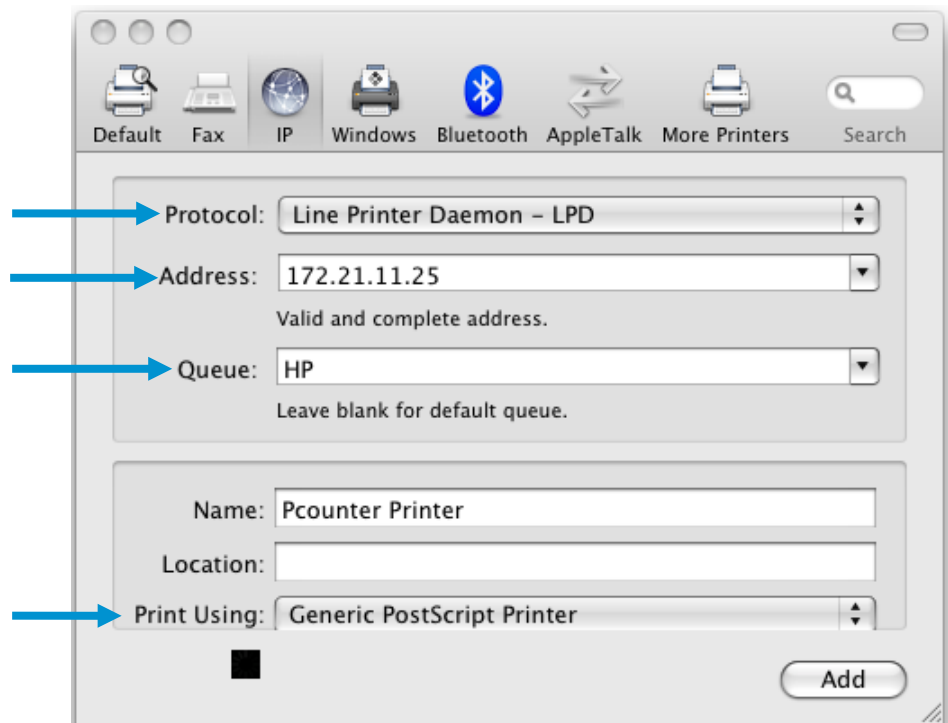
Important: This guide was written based on Mac OS 10.5.6. Whereas specifics may be slightly different on other versions of OSX the principles described will be exactly the same.

Important: In order for Pcounter to account for Mac printing and correctly **associate print jobs to the correct Active Directory user**, either:

- The Macs must themselves be part of the **Windows Domain** and the user must be logged in with their **AD user account**.
- You must use **PcounterClient** on the Macs to allow users to enter their AD or Pcounter User credentials.

Regardless of how the users are authenticated to the Mac, the configuration of the queue is the same.

Create a new printer through **Apple > System Preferences > Print and Fax > Plus (+)** sign.



Accounting for Mac Printing

The required settings are:

- Protocol needs to be **Line Printer Daemon – LPD**.
- Address needs to be the **IP Address of the Windows Pcounter Print Server**.
- Queue needs to be what you set to be the **LPR queue name** back in **Step 1**.
- We recommend using the **Mac Generic driver**. Ensure you choose the same PDL as the driver on the server (e.g. PCL or PS).

Click **Add** once complete to finish the setup of the print queue.

If users authenticate to AD when logging into the Macs the setup of Mac printing is now complete. Any jobs sent to the Mac based queue will be forwarded to the queue on the server and accounted for via Pcounter.

If users do not authenticate to AD then they will need to use **PcounterClient** to enter **AD credentials** on the Mac. The installation and setup guide for PcounterClient for Macs is included with Pcounter Server. Default location is **C:\Program Files\Pcounter for NT\NT\Client\Mac Popup Client.pdf**.