

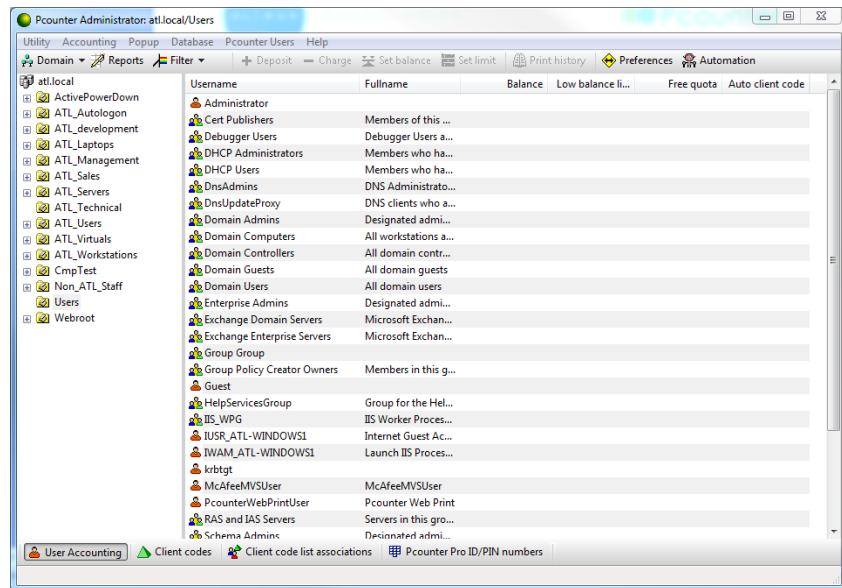
Pcounter Database Maintenance

INTRODUCTION

This document details how to backup user databases in Pcounter for Windows. Backing up the data will have almost no down time. Once the data has been backed up, time taken to re-import the data will vary depending on the number of Users within Active Directory/Pcounter Users Database.

Backing up Balances

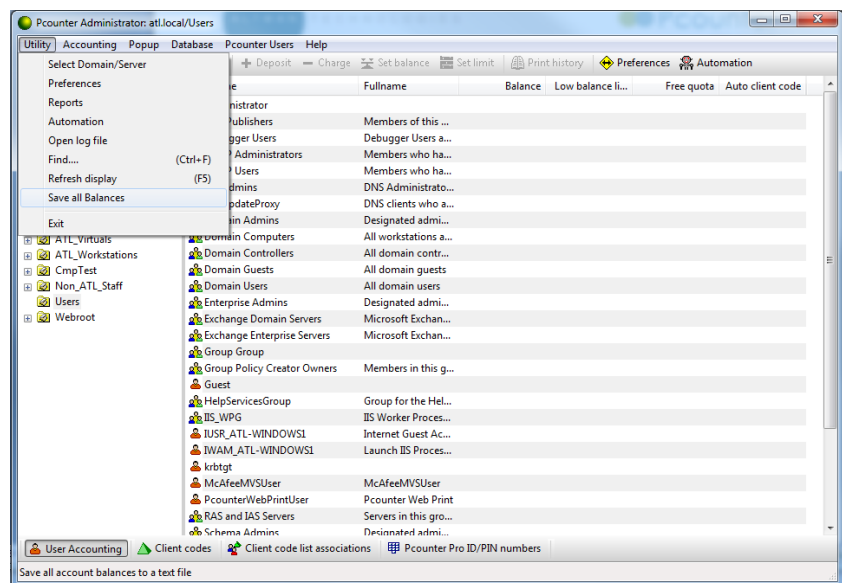
Pcounter Administrator



Choose Utility>Save All Balances to save the Balances in a bat/csv file. This will save all balances in the selected OU

[Click here to access further How to Guides](#)

For Support
[Click here](#)



Pcounter Database Maintenance

Remember

To ensure that the Pcounter shared folder is backed up on a regular basis as this folder contains the Pcounter Databases.

Pcounter Databases

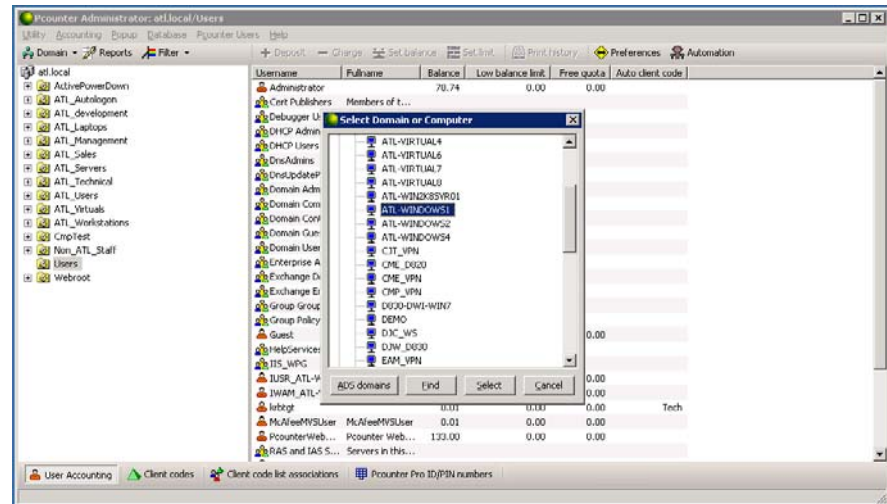
Domain.DBF/Domai n.CDX – Balance Database/Index file

Popup.DBF/Popup.C DX – Client Codes Database

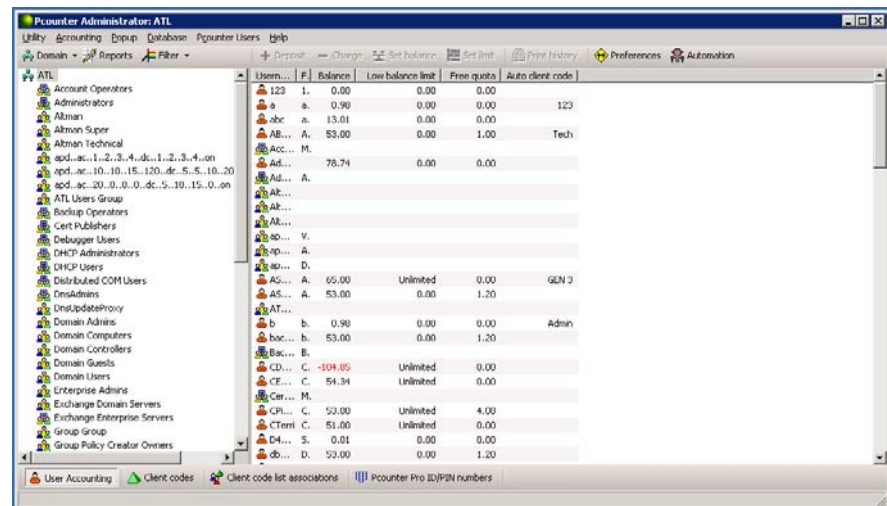
Passoc.DBF/Passoc. CDX – Client code list Associations Database/Index files

Cardpin.DBF/Cardpi n.CDX – ID/PIN Databases
Printerpopupusers.D BF/
Printerpopupusers.C DX –Pcounter Users database.

Alternatively, you can change the view in Open Padmin to show the full user list as below. Choose Domain>Select Domain and select the Pcounter server from the list



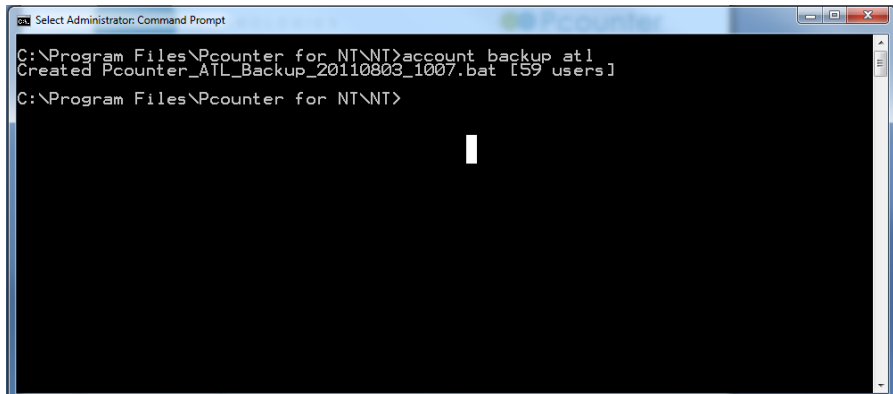
This will show the full list of users, where you can choose Utility>Save All Balances to save the Balances in a bat/csv file.



Pcounter Database Maintenance

Command line

Open an MS-DOS Prompt window and run the command below, where 'atl' is the Netbios domain name of the domain you are backing up the data for.



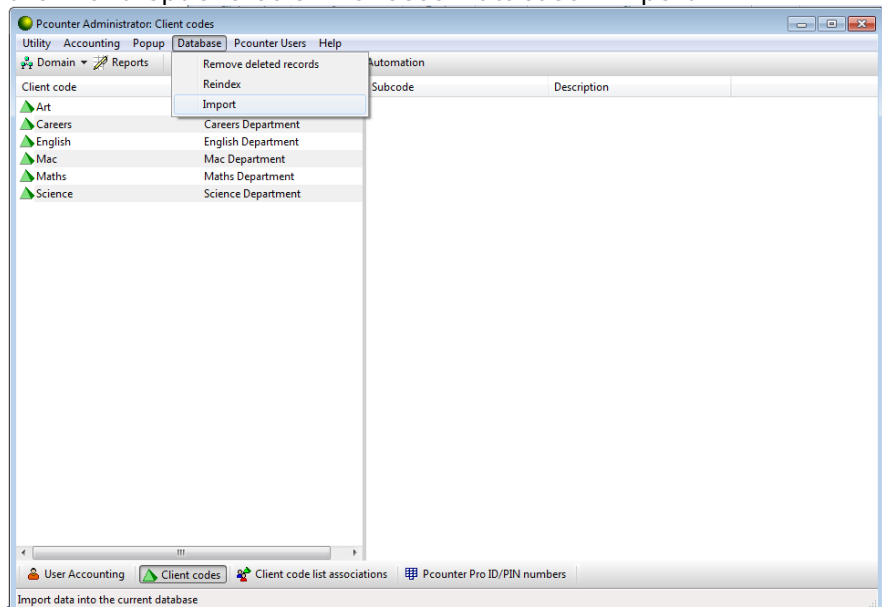
```
Select Administrator: Command Prompt
C:\Program Files\Pcounter for NT\NT>account backup atl
Created Pcounter_ATL_Backup_20110803_1007.bat [59 users]
C:\Program Files\Pcounter for NT\NT>
```

Importing Balances

In order re-import the balances, you can run the .bat file generated above from the location of account.exe

Client Code databases

It is not possible to export data from the Client Code List and Client Code List Associations databases, but the Client Code List Database file can be opened using MS Excel and imported using the menu options below. Choose Database>Import



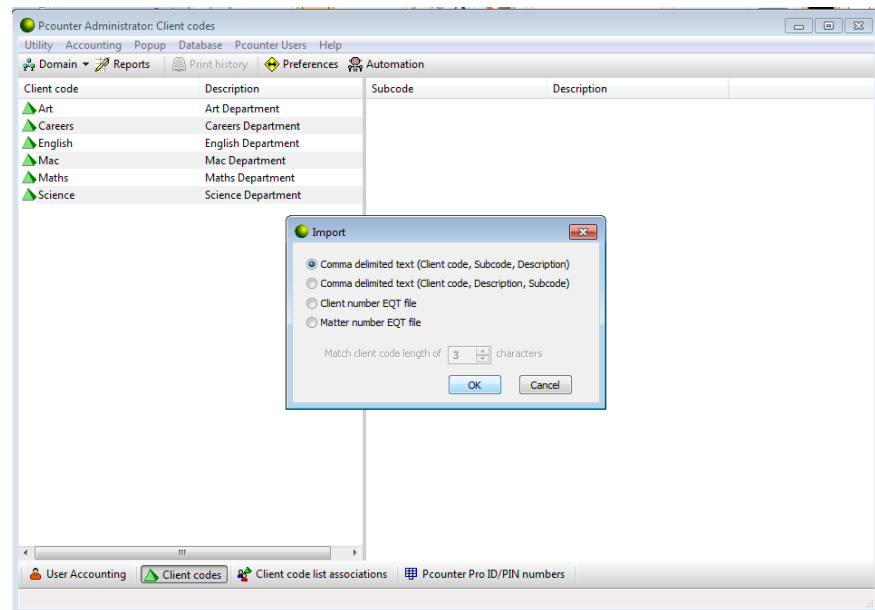
Client codes can be used to assign cost centres and for department/client billing.

Please see the How to guide named Popup and Chargeback

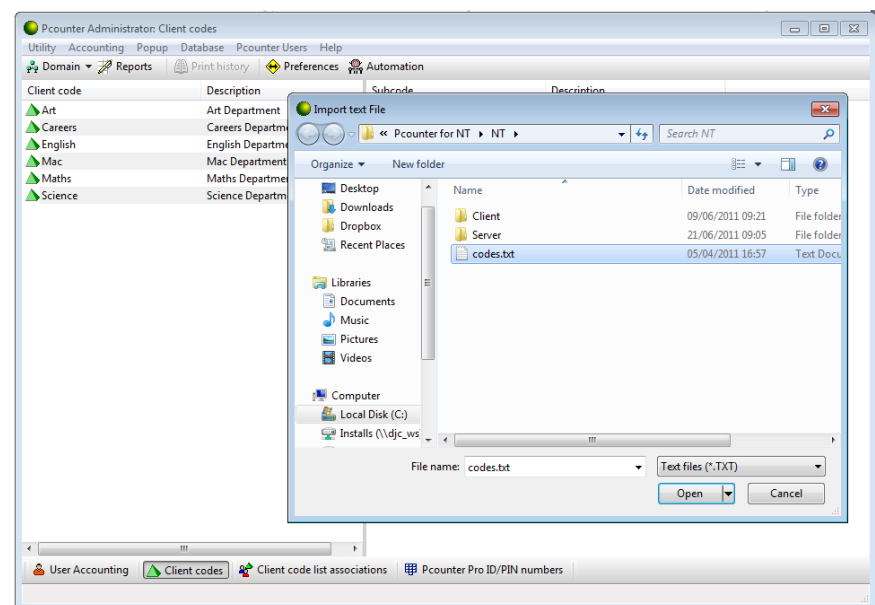
Pcounter Database Maintenance

Client Code databases continued....

Ensure that the csv file is in the format specified.



Choose the file to import.



Pcounter Database Maintenance

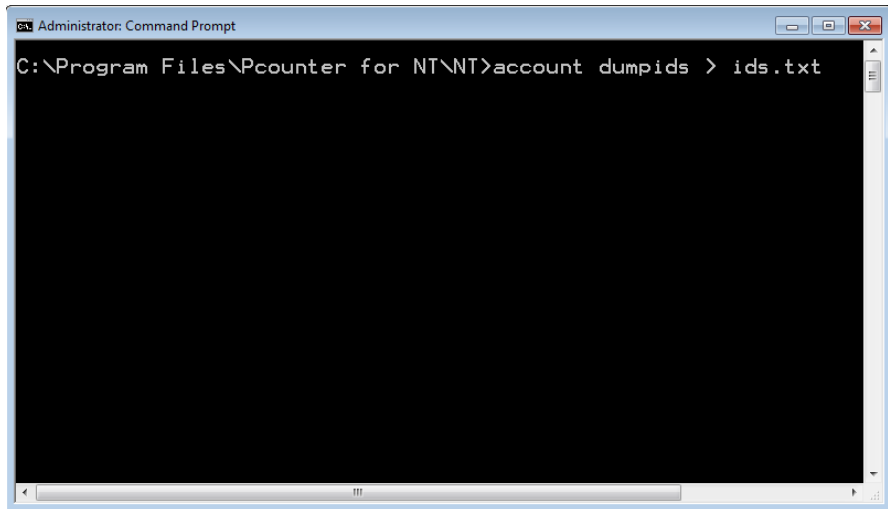
ID/PIN Numbers can be used when Pcounter is implemented in an environment where photocopy integration/secure/pull printing is required.

There are a number of solutions available. Please see our website below for further details

<http://www.altman.co.uk/solutions/print-copy-management>

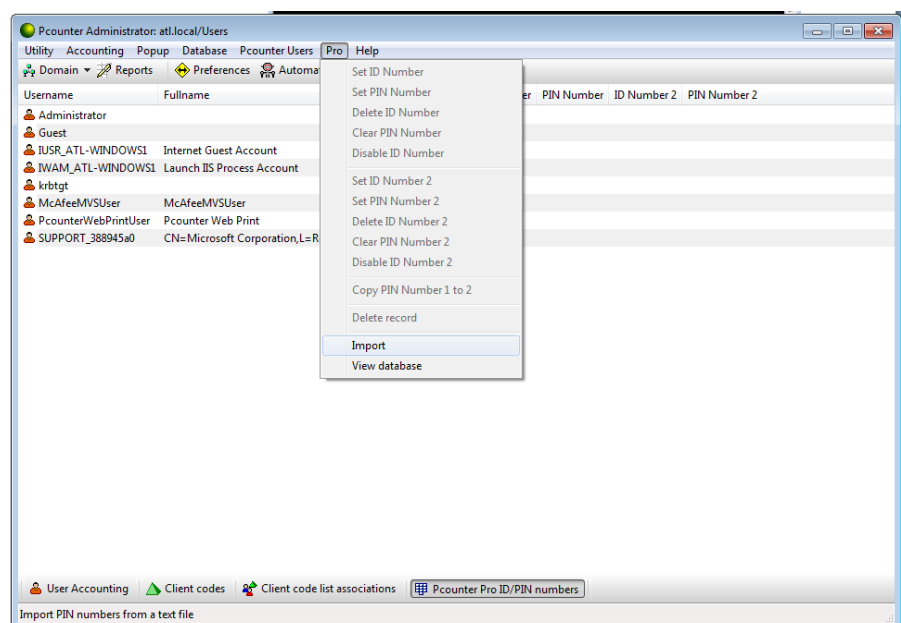
Exporting Card ID Numbers

In order to export the data from the Pcounter ProID/PIN Number database, open an MS-DOS Prompt window and run the command below -



```
Administrator: Command Prompt
C:\Program Files\Pcounter for NT\NT>account dumpids > ids.txt
```

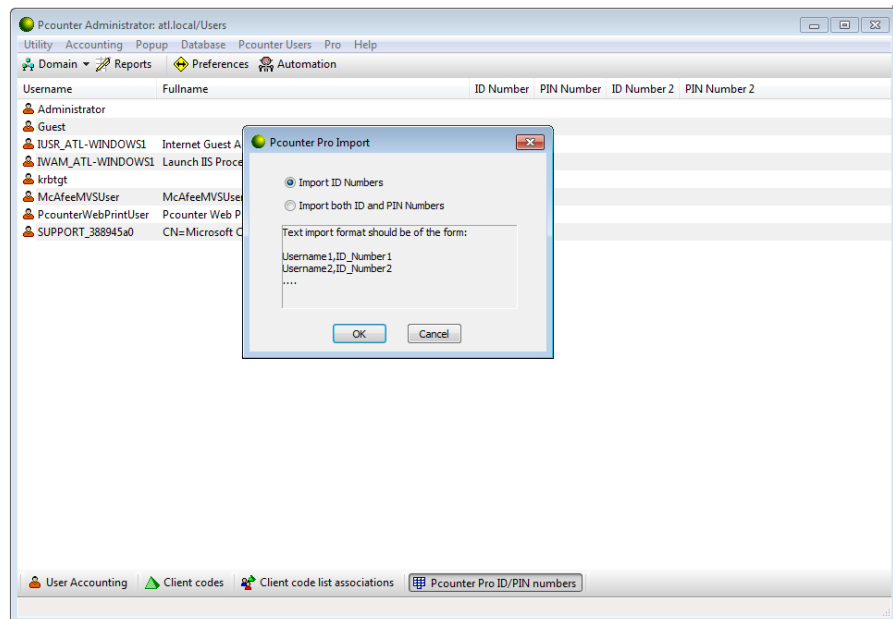
Which will place all Pcounter usernames/ID Numbers into a text file so that they can be re-imported. Nb PIN Numbers cannot be exported as they are encrypted. See below on importing
Choose Pro>Import



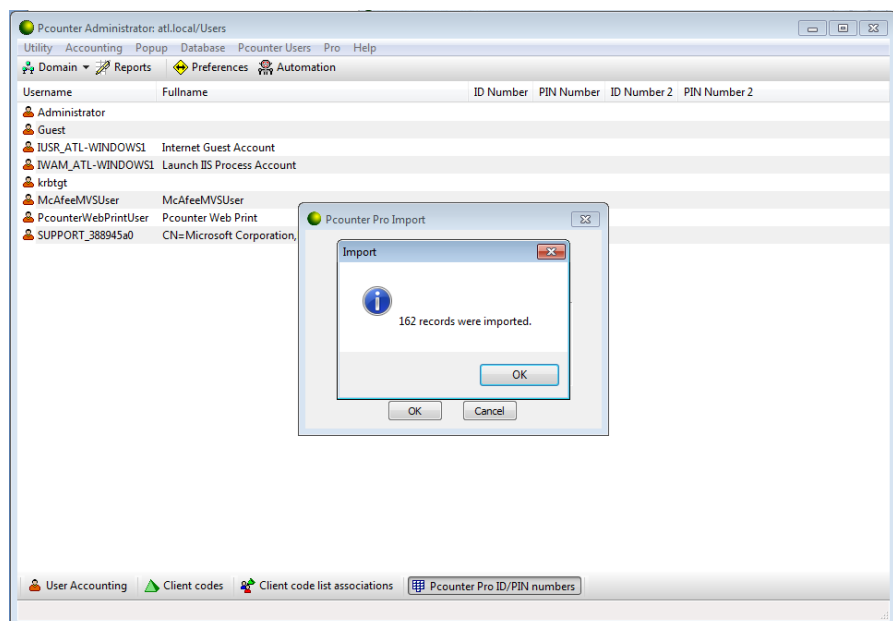
Pcounter Database Maintenance

Exporting Card ID Numbers continued...

Select the file txt/csv file to import



This will display a success import message below –



Pcounter Database Maintenance

Pcounter Users can be created in a scenario when there is no Active Directory or if 'guest' users need to be able to print. These users need to authenticate against the Pcounter Users database using the Pcounter Client/Pcounter Popup.

Pcounter Users Database

The passwords within this database are encrypted, but can be imported using the method below, again using the database>import option as below. Please ensure that the details are in the format specified.

