



# Messaging Configuration Guide for Pcounter for Windows

(Requires Pcounter 2.14 or above)

## Contents

[Setting Pcounter Configuration](#)

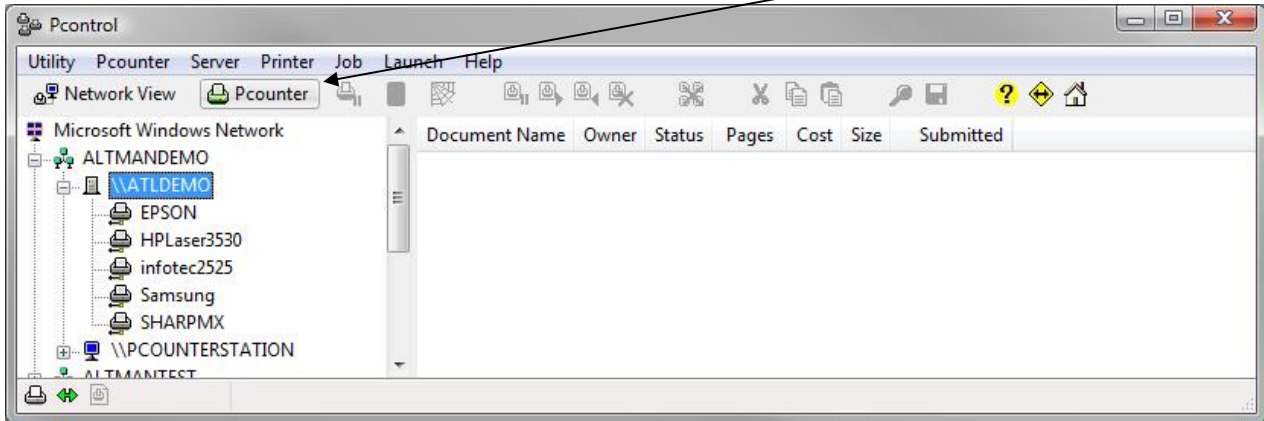
[Setting Windows Configuration](#)

[Workstation Configuration](#)

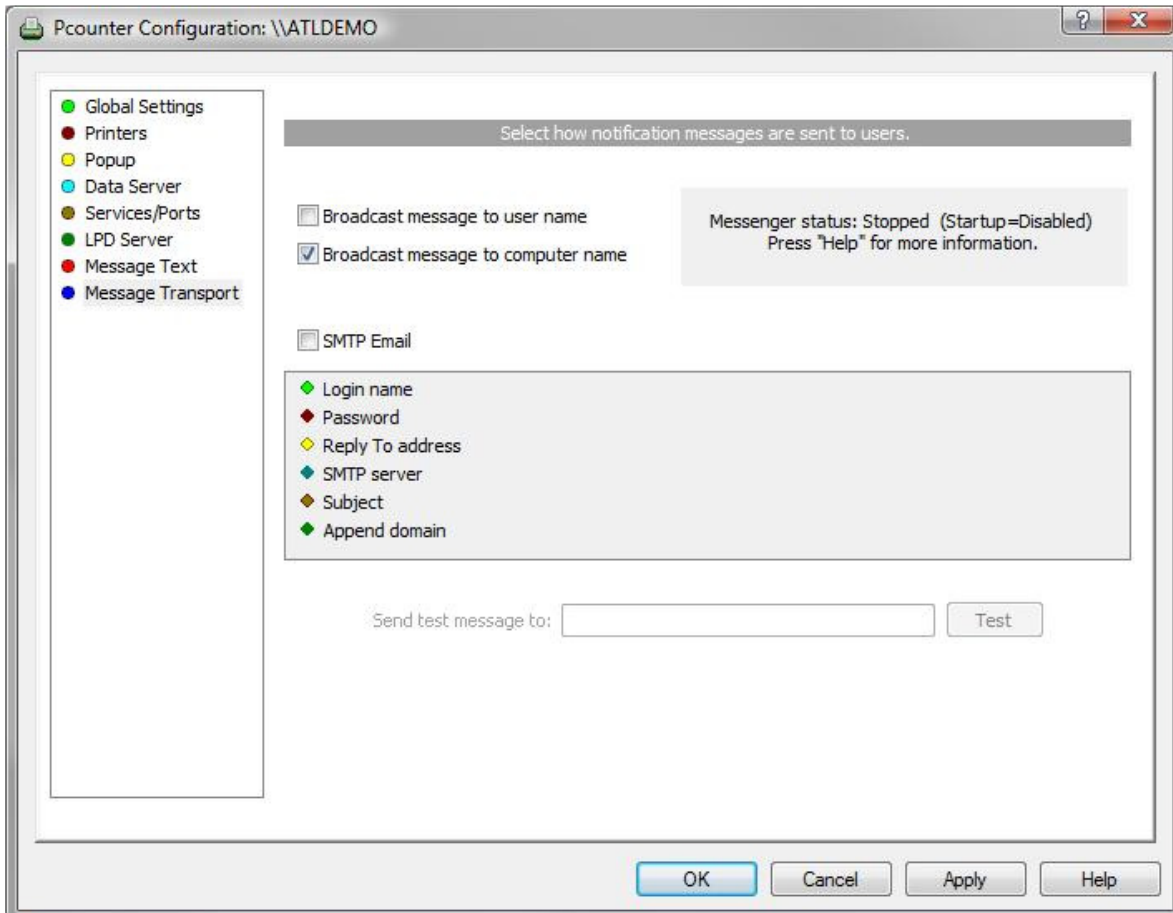
[Setting Example Messages](#)

# Setting Pcounter to use the Pcounter messaging

Open Pcontrol, Highlight the print server, and click on  Pcounter



Select "Message Transport" on the left panel

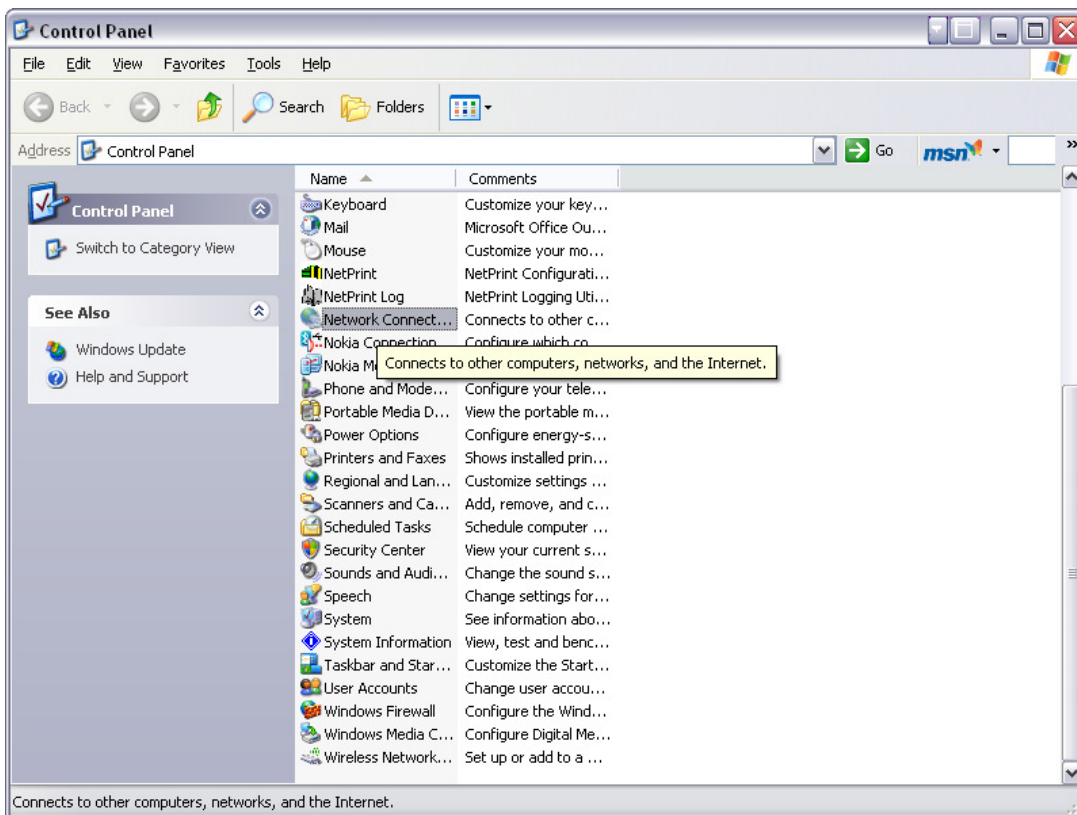


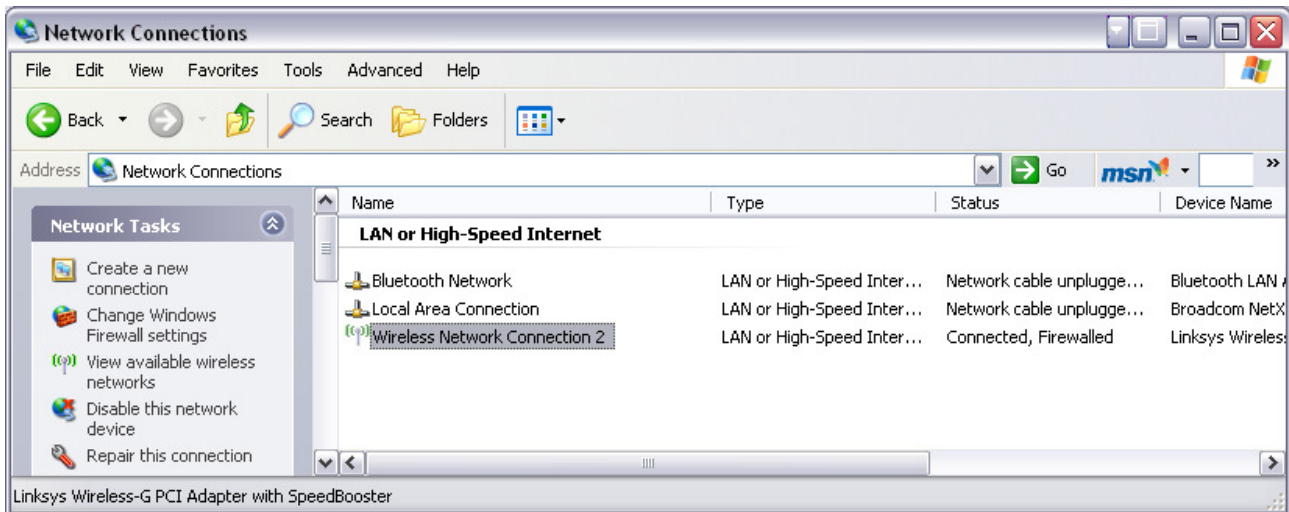
Ensure it is set as "Broadcast message to computer name"  
Click on Ok, then restart both services using the Services/Ports section on the left panel.

You can change the messages in the Message Text section.

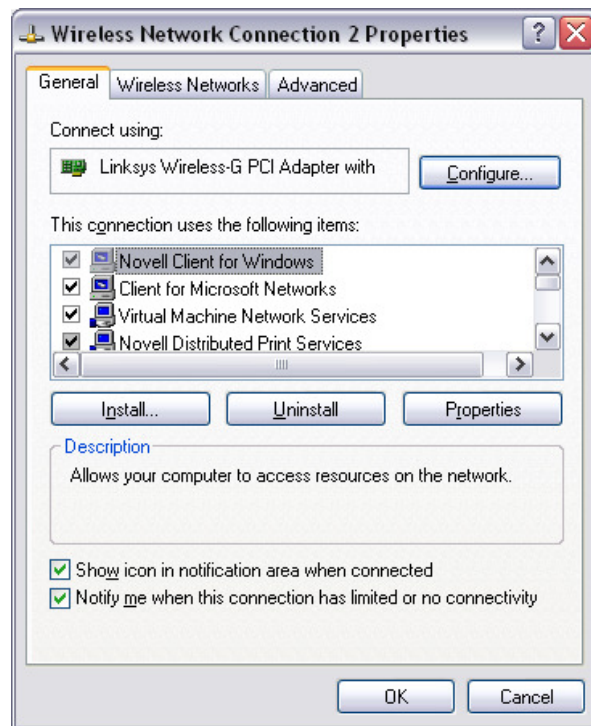
## Forcing TCP/IP to have *NetBIOS* enabled.

Use the windows control panel to show network connections.

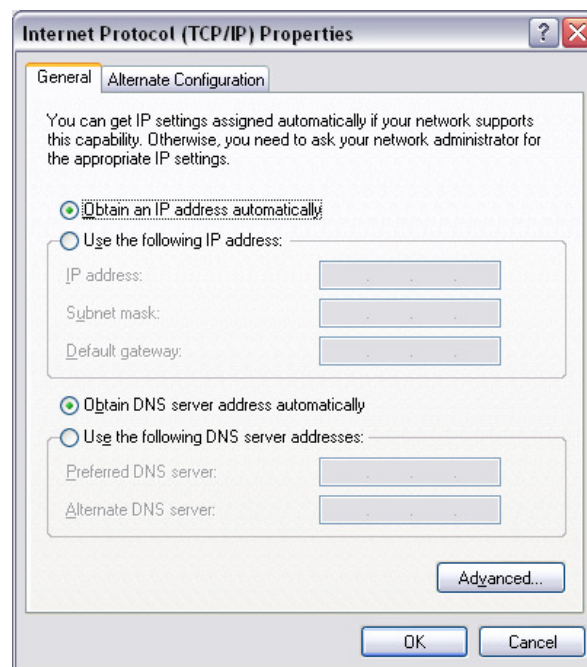
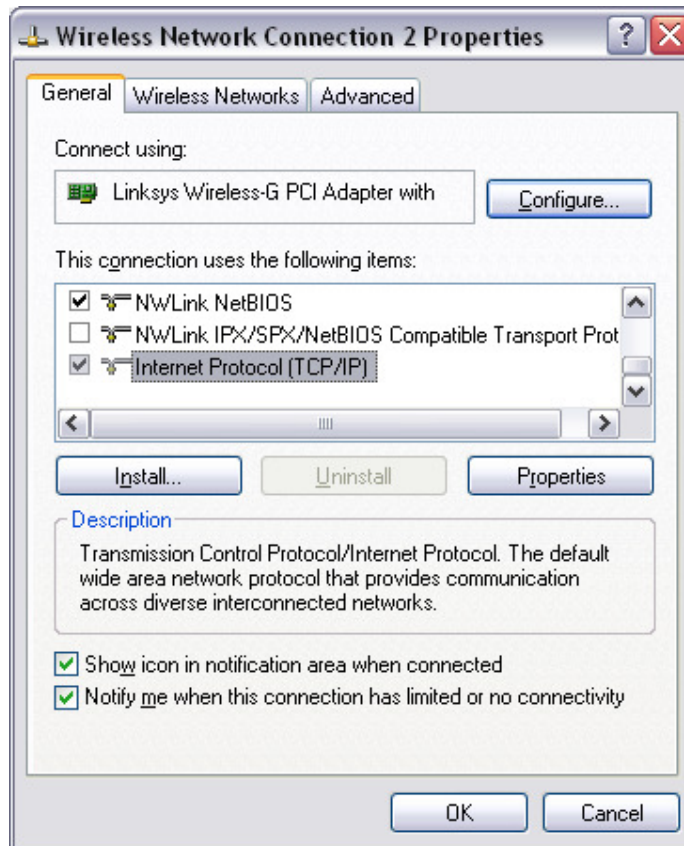




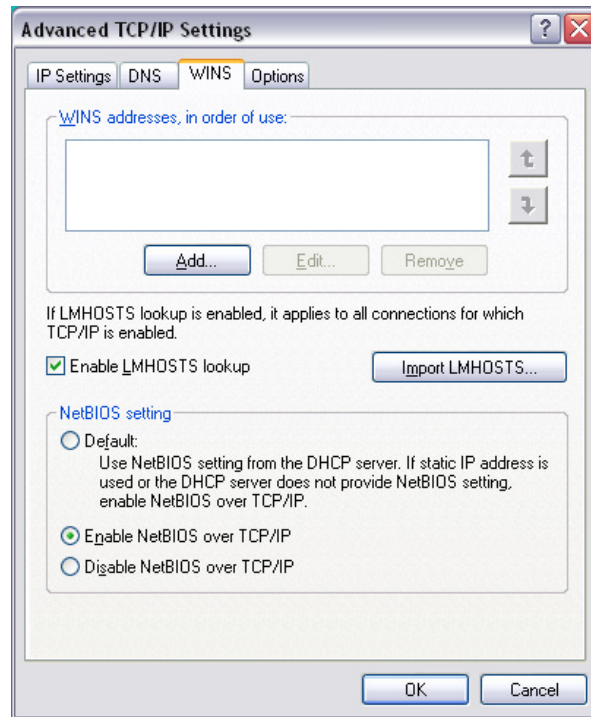
Right Click the connection and select properties.



Now select Internet Protocol (TCP/IP) and then select properties.



Click on Advanced, then the WINS Tab (NB: You do not need WINS running on your network)



Now ensure that Enable NetBIOS over TCP/IP is selected, click on OK, OK, Close. Reboot the workstation to ensure the setting is saved and enabled.

**VERY IMPORTANT: The Server needs netbios enabled too – with a planned reboot as per the workstations.**

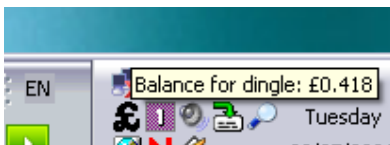
## Workstation Configuration – PPopup or Wbalance

Ppopup.exe or Wbalance.exe is required to be running on the workstation to allow it to communicate with the server and receive the messages.

We would recommend that these are run from a login script or group policy for ease of rollout.

### Wbalance.exe

*Provides users with a quick method of viewing their balance as well as allowing messages.*



For testing purposes, you can simply load this manually on your PC – it is located by default in c:\program files\Pcounter for nt\nt on the server where Pcounter is installed.

To use this for all users, copy wbalance.exe to a user accessible location, and add the following to the login script:

```
START DRIVE:PATH\wbalance
```

It will then run as the user logs in.

Run this as an administrator first manually, with read/write rights to the same location as wbalance.exe. When prompted select the Pcounter Data Server. This selection gets written to a Pcounter.ini in the same location and is then used for all future loads of Wbalance.

## **PPopup.exe**

*PPopup is used for print confirmation, client codes entry and more. Please refer to the main Pcounter manual or our PPopup guide for additional help.*

For testing purposes, you can simply load this manually on your PC – it is located by default in c:\program files\Pcounter for nt\nt on the server where Pcounter is installed.

We will configure it in this instance to run in a messaging only mode

To use this, copy ppopup.exe (It will be installed by default to c:\program files\Pcounter for nt\nt) to a user accessible location, and add the following to the login script:

```
START DRIVE:PATH\ppopup /msgonly
```

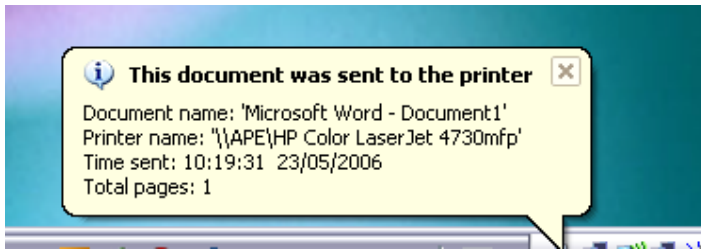
It will then run as the user logs in, and allow for messages to be received only.

If you do not receive messages, ensure it loaded using windows task manager, or by checking that you can see a small green pyramid:



## Example Messages

When users print they may receive confirmation as follows:



Any messages/warnings will look like this:

