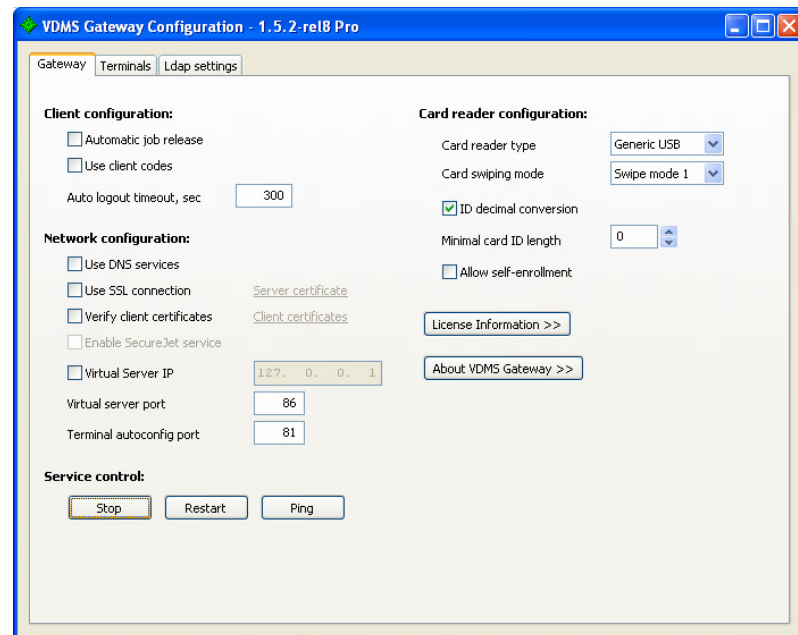


Pcounter Ricoh Embedded Upgrade

INTRODUCTION

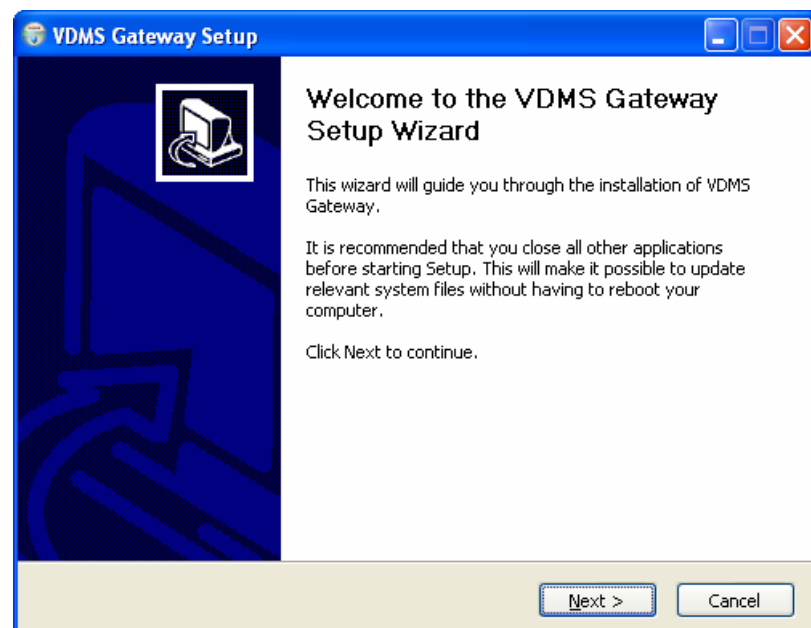
This document details how to upgrade the Pcounter Embedded software for Ricoh MFDs – aka VDMS Gateway

Step One – Stop service, licence and install



Copy the file license.ini to C:\Program Files\VDMS Gateway\

Step Two – Run Setup



[Click here to access further How to Guides](#)

For Support
[Click here](#)

Pcounter Ricoh Embedded Upgrade

Remember

Always ensure that you have a valid licence before attempting an upgrade as upgrading without a licence will cause the software to cease working.

If your licence has expired contact info@altman.co.uk to renew

Step 3 – Ensure licence is validated

License Information <<	
Company Name	Ubiquitech A/S
Number of terminals	unlimited
VDMS Server ID	
Integration support	Pcounter for Windows
SSL support	Enabled
Cluster support	Enabled
LDAP support	Enabled
SecureJet support	Enabled
License Expiry	Permanent
Maintenance Expiry	01-01-2100
License Status	Validated

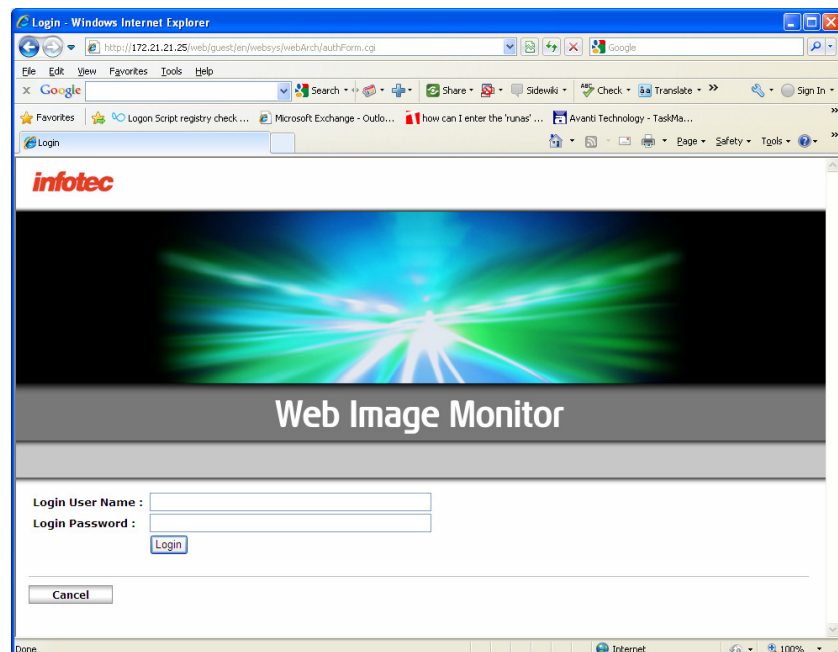
Best Practice Tips...

Back-up C:\Program Files\VDMS Gateway before upgrading in case problems arise

Ensure you stop the service as advised in step 1

Step 4 – Updating Xlet

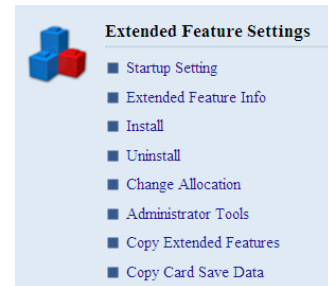
Login to copiers webpage, go to configuration>Install (Under the heading 'Extended Feature Settings')



Pcounter Ricoh Embedded Upgrade

Don't forget

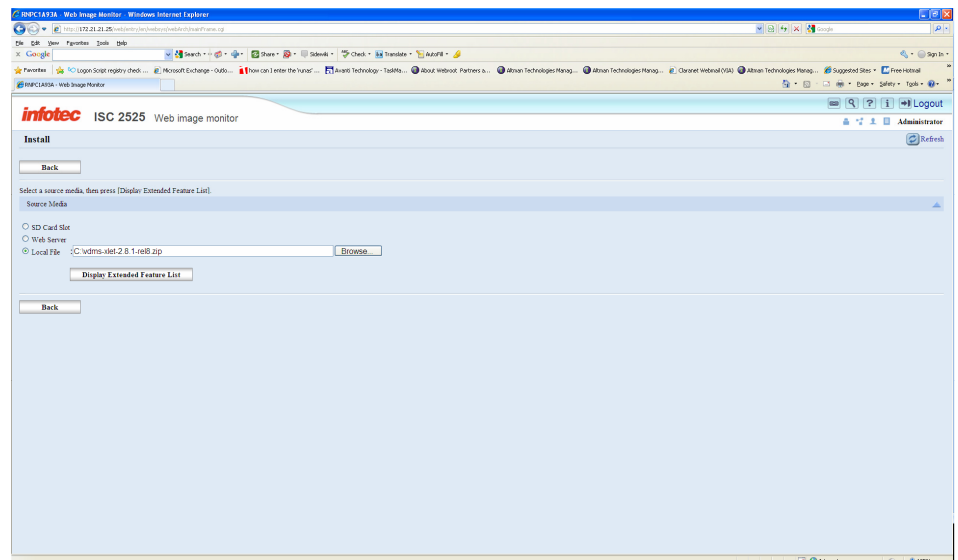
You need to ensure that you are installing the Xlet onto the Correct SD Card Slot. Choose 'Extended Feature Info'



Total Applications: 3

Extended Feature Name	Priority	Type	Status	Description	Version	Allocated to	Startup Location
VDMS Terminal		J	Starting Up	VDMS client application for Ricoh MFPs	2.8.1-reB	---	SD Card Slot 3
Screen Capture Tool		C	Starting Up	Screen Capture Tool	1.0.0	None	Device HDD
JavaTM Platform		C	Starting Up	JavaTM Platform CS4772-02	2.11	Printer	SD Card Slot 3

Browse to the Xlet

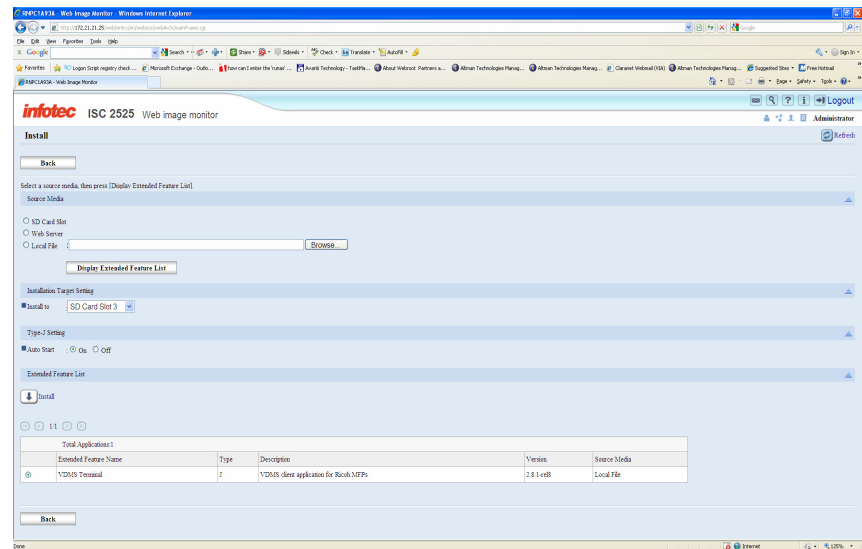


Pcounter Ricoh Embedded Upgrade

Remember

Ensure that auto start is selected when installing the new Xlet.

Installing the Xlet



Step 5 – Reboot copier and restart VDMS Gateway service.

Upgrading VDMS Gateway and Xlet is now complete. If you experience any issues upgrading or have any further questions please contact **Altman Technologies Support** on **0113 273 0300** or **support@altman.co.uk**