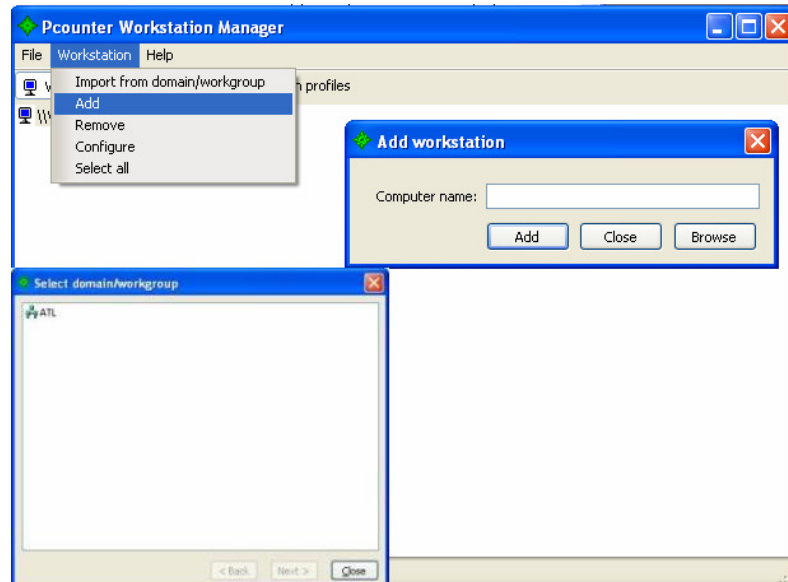


## Pcounter Workstation Manager

### Introduction

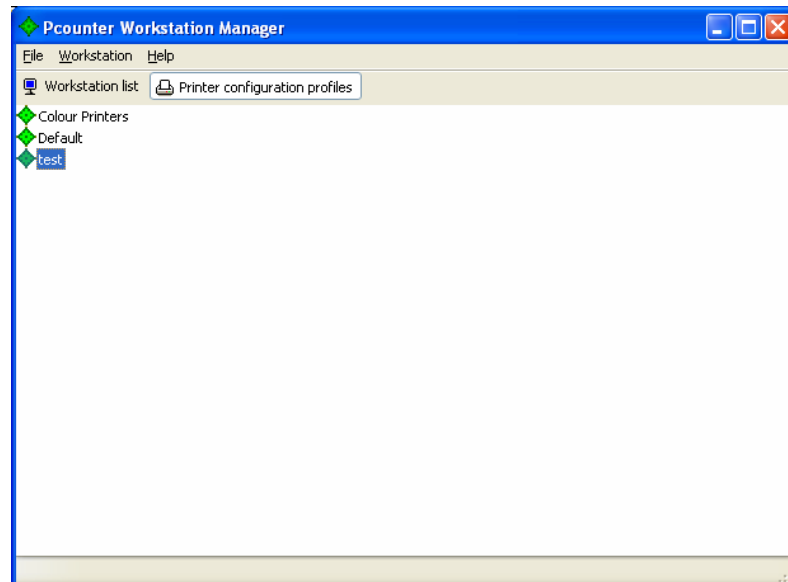
Pcounter Workstation Manager – locally attached parallel or USB printers can be accounted for with configurable page count limits and warning messages, with all print activity logged centrally. Use this guide to discover how to install and configure rules within Pcounter Workstation Manager

### Step One



Select workstation to monitor and choose add/Import from the menu.

### Step Two



[Click here to access further How to Guides](#)

For  
Support  
[Click here](#)

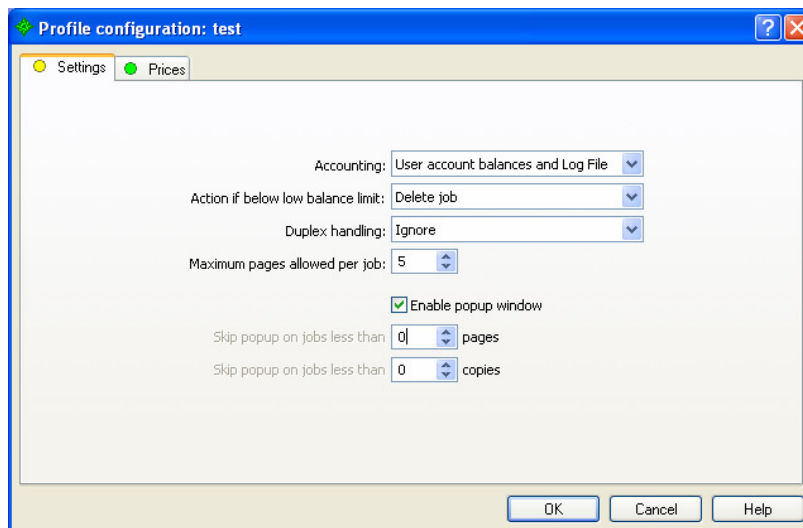
Printer Configuration Profile  
Double click Printer Configuration Profile

Pcounter Workstation Manager

Step Three

Best Practice Tips...

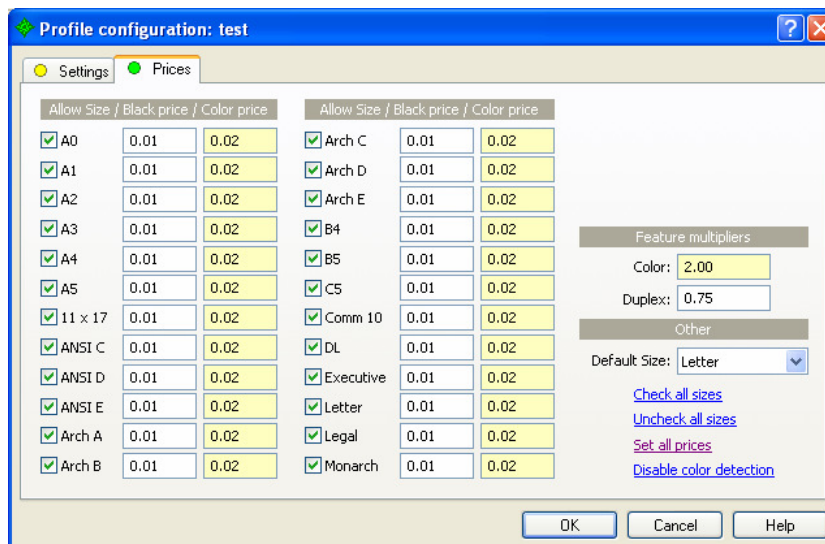
Add workstations to workstation list before configuration as it is possible to configure multiple workstations at once.



Set a rule for maximum number of pages per job.

Step Four

**Don't forget**  
Pcounter Workstation Manager is installed with Pcounter and can be licenced for 5 workstations for up to 60 days as trial software to let you try before you buy!



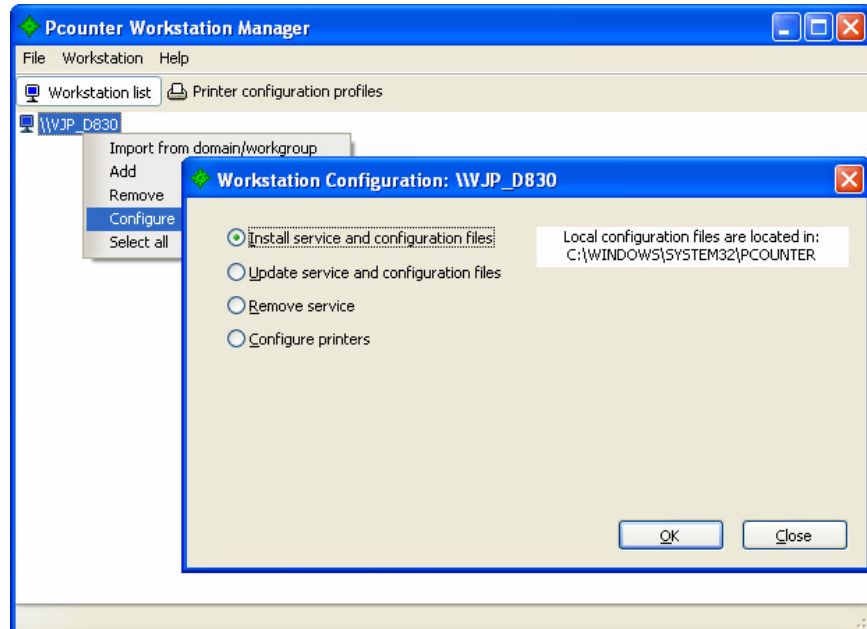
Set Prices for Colour/Mono/Duplex

Pcounter Workstation Manager

Step Five

**Remember**

Set accounting and action if below 'low balance limit' to stop users having a negative balance.



Install Service and configuration files.