

Pcounter Embedded HP (Pjet100) Upgrade

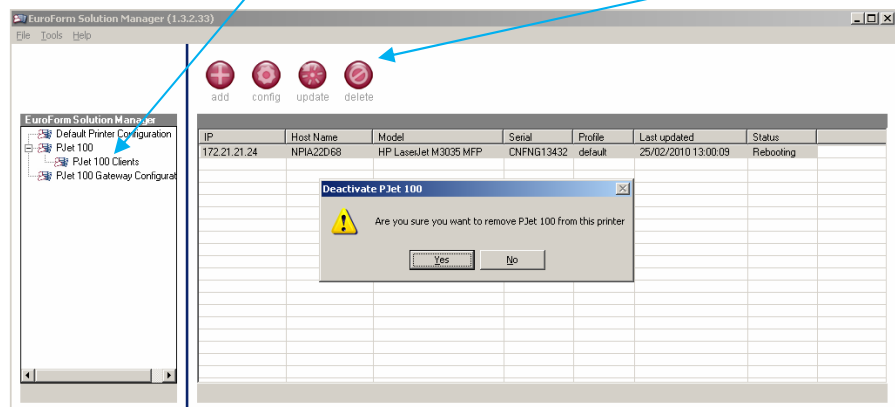
INTRODUCTION

This document details how to upgrade Pcounter Embedded for HP MFDs **PJet 100**

Note: A PJet 100 upgrade requires an uninstall and a reinstall. Consequently there will be a PJet **outage** for the duration of the procedure. Be sure to action at a quiet period or out-of-hours.

Step One – Delete the Clients

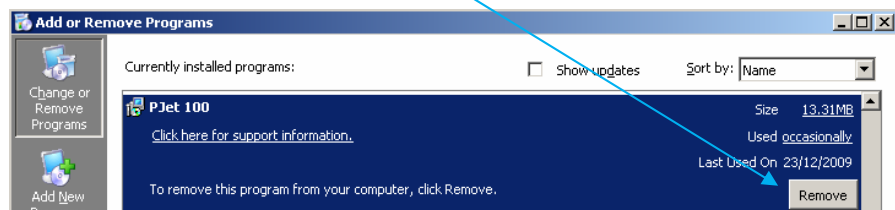
Pjet100 needs to be removed from each MFD. Do this through **PJet 100 > PJet 100 Clients > Highlight** the client > **Delete**



Repeat this for each MFD

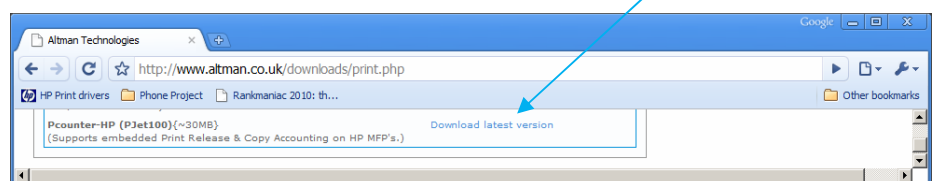
Step Two – Remove the Software

Close the application and remove using Windows **Add/Remove Programs**



Step Three – Download the latest version

Download the current version from our downloads page <http://www.altman.co.uk/downloads/print.php>



[Click here to access further How to Guides](#)

For Support [Click here](#)

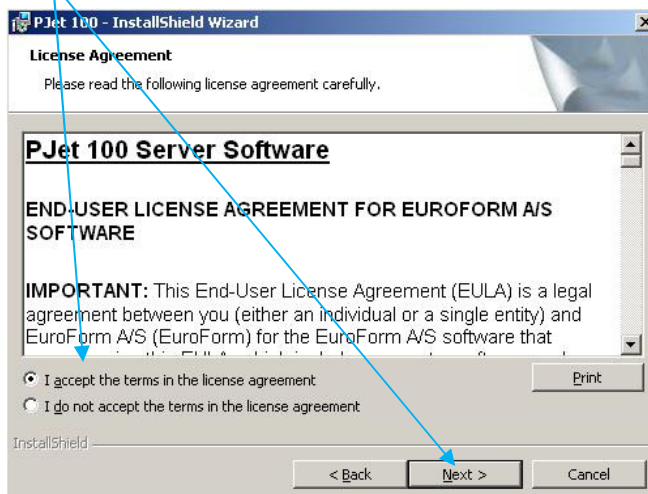
Pcounter Embedded HP (Pjet100) Upgrade

Remember

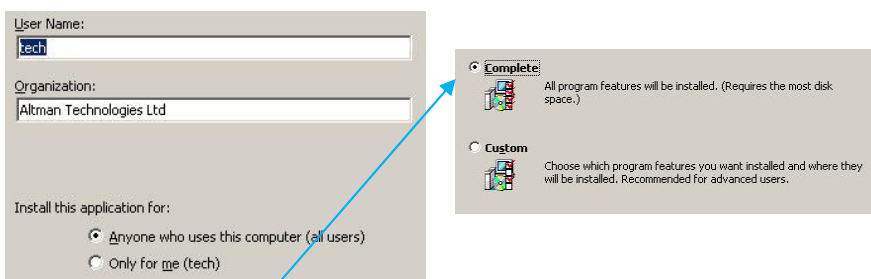
The configuration settings for each individual printer are held in the registry and not deleted when the application is uninstalled. Consequently, when the printers are re-added their settings will remain

Step Four – Reinstallation

Run the installer **PJet_setup_[version].exe**. Read and accept the licence agreement



Enter the **Username** and **Organisation** and select who the application will be available for. Click **Next**.



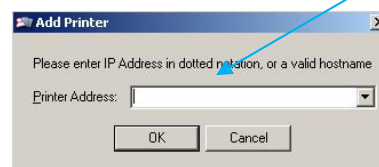
Select a **Complete Install**. Click **Next**. Click **Install** to complete the installation.

Best Practice Tips...

We recommend backing up C:\Program Files\EuroForm\PJet 100\Gateway\PJet100 Config.xml before uninstalling the existing version

Step Five – Re-adding the Printers

Open Pjet100 and go to **PJet 100 > PJet 100 clients** from the menu structure. Click the **Add** button. This will prompt for the **IP address** of a printer

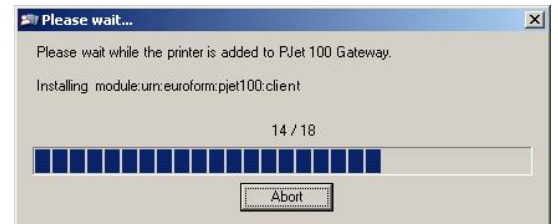
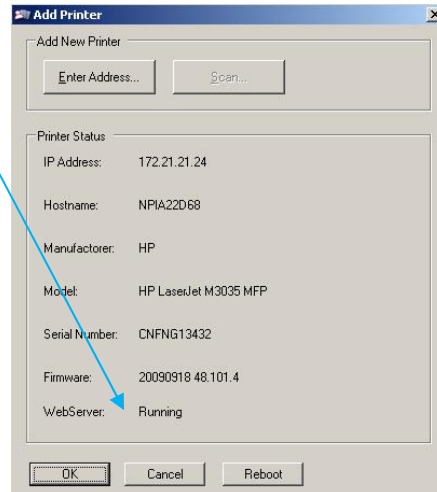


Pcounter Embedded HP (Pjet100) Upgrade

Don't forget

If the **Webserver** shows **Not Running** you have not setup an Admin password for this printer, or you have not entered this password into PJet 100. This may occur if the printer disc has been initialised (reset).

The details of the printer will be displayed. Click **OK** to add this printer. The progress of the install will be displayed



Repeat this process for each of the MFDs

Upgrade of Pjet100: Pcounter Embedded for HP is now complete. If you have any problems or further questions please see our **PJet 100 FAQ page**
http://www.altman.co.uk/support/support_pcounter cms.php#117

If your questions are not answered here please feel free to contact **Altman Technologies Support** at:

<http://www.altman.co.uk/support/index.php>
support@altman.co.uk
0113 273 0300