



## OVERVIEW

Prineo Chameleon provides fast, simple, flexible access to high volume, special finishing print facilities for end users via print rooms or reprographics areas. Users can upload documents via a web portal for processing in the print room, or jobs can be automatically re-directed to the Prineo system using Pcounter's rule based criteria such as page count, copy count or cost.

Cost estimates are shown as the user chooses their options – authorisation by a supervisor can be enforced – and the user can pay for the job from their Pcounter network account or have it assigned against a Pcounter charge-code. Users can receive progress updates via email or web portal where there is access to a document library for easy retrieval and resubmission of previous work.

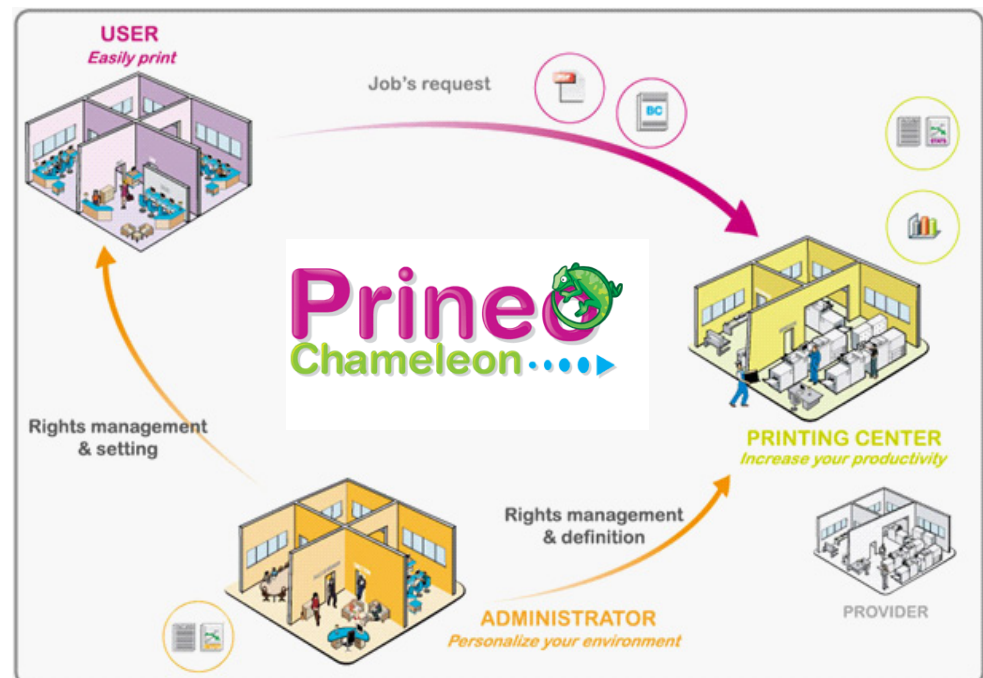
Additional items that are sold by the organisation such as paper or other "shop" items can be sold via an online shop facility with stock management also supported.

Prineo Chameleon is also available as a stand-alone solution if accounting capability is not required.

## Datasheet

# Prineo Chameleon

Print Room & Reprographics Management with Remote Job Submission



## KEY FEATURES

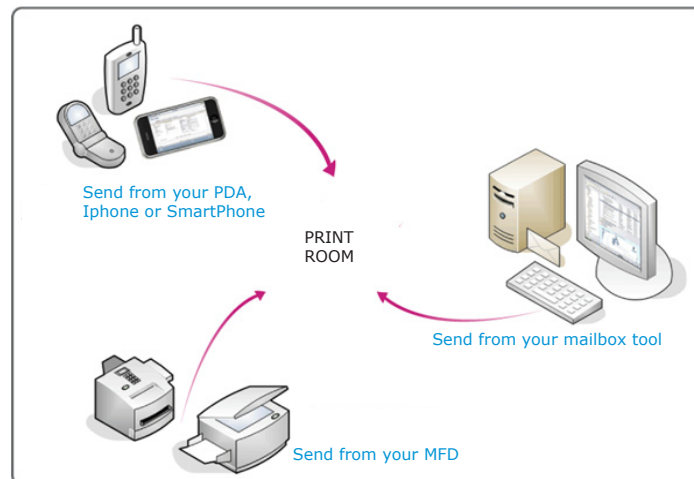
- ✓ Complete automated print system
- ✓ Document upload and conversion to pdf format via web portal - no client software required
- ✓ Job cost estimates and validation
- ✓ Auto re-direction using Pcounter rules
- ✓ Real-time charging and authorisation/quota management
- ✓ Job tracking and user notification by email/web portal
- ✓ Document library for easy retrieval and resubmission, automated templates
- ✓ Supports multiple print rooms
- ✓ Integral audit trail and accounting via Pcounter
- ✓ On-line shop and stock management

## TECHNICAL SPECIFICATIONS

- Dedicated server running Windows 2003 or 2008 Server
- Office 2007 required on Server build
- Server specification: Dual Core, 2Gb (4Gb recommended), 200Gb+ storage
- Supports Windows, Mac and Linux clients via most web browsers

## KEY BENEFITS

- ✓ Dramatically improves print room efficiency
- ✓ Enhanced user service - safe, consistent results
- ✓ Reduces costs, increases staff productivity and improves workflow
- ✓ Maximises use of multiple devices for large jobs
- ✓ Eliminates waste and duplication of work
- ✓ Accuracy assured
- ✓ Centralised accounting by user/cost centre



## EVALUATION PROCESS

Live demonstration or webinar overviews can be arranged. For more information please contact our solutions team on 0113 273 0300 or email [solutions@altman.co.uk](mailto:solutions@altman.co.uk).