

OVERVIEW



Altman Technologies provides XPR Enterprise POS for enabling ad hoc accounting and charging against user accounts and cost-centres within Pcounter. This Windows-based software application enables organisations to utilise the user's Pcounter account to be charged for a variety of additional products and services outside of the usual print and copying automated accounting provided.

Typical uses for this include reprographics and print room accounting/re-charging, library fines or other charges for services that the organisation wishes to fund from a Pcounter-based network account, such as student shops.

All transactions are logged centrally and then form part of the enterprise reporting capability which can encompass all printing, copying and other transactions to ensure accurate and automated management information is available.

It is simple to manage and maintain products and price details within the XPR Enterprise POS database. Intensive auditing records for all POS transactions are available via XPR Reports.

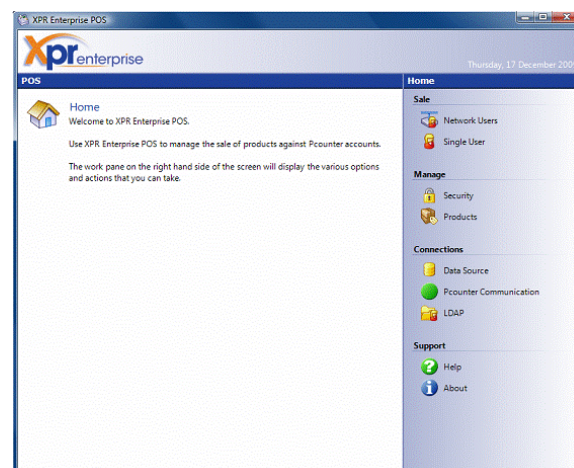
Datasheet

XPR Enterprise POS

Ad Hoc Transaction Accounting For Print Rooms

KEY FEATURES

- ✓ Real-time transaction list readily available
- ✓ Simple administration of products/service/price details
- ✓ Centrally managed, intuitive and user friendly
- ✓ Add, delete or adjust product/service settings
- ✓ Full management control over products sold and price attached



KEY BENEFITS

- ✓ Secure, cash-free solution
- ✓ Enables Pcounter to be used as single centralised cashless purse
- ✓ Integrated accounting for non core print/copy transactions
- ✓ Reduces administration tasks associated to purchasing

Code	Name	Charge Group	Charge Sub Group	Quantity	Price	Multiplier	Cost
TB-A-B...	A4 Binding (Example Only)	IT	RD	3	£0.99	1	£2.97
TB-A4L...	A4 Laminating			1	£1.25	1	£1.25
TB-STA...	Stapling			1	£0.46	1	£0.46

TECHNICAL SPECIFICATIONS

- Standard Windows PC 1 GHz or faster
- Operates with XP & Vista
- 512 MB RAM (minimum required 128 MB)
- 16 GB of available hard-disk space
- Network connection available
- Prerequisites
 - Pcounter Pro for Windows/NetWare



EVALUATION PROCESS

Online web demonstration available. 60-day evaluation software ready to download via our website www.altman.co.uk. Alternatively contact our solutions team on 0113 273 0300 or email solutions@altman.co.uk.